



2024 Custom Collection

40
ANNIVERSARY
1984-2024





01 LINEA PREMIUM
PREMIUM LINE

03537	VIS PRO	10
03569	AIR	11
04198	NANIMA	12
10203	MONCH	13
04185	HYDRA	14
11098	RAIN PRO	15
05571	AERO1	16
05572	3PEAKS	17
05554	HERO RACE	18
07282	CLIMA ZERO	19
08179	CHRONO	21
08210	X-RACER	22

02 LINEA ELITE
ELITE LINE

03553	AERO RACE	26
03315	RACE	27
04241	GREEN WARM	28
10202	SOFTSHELL	29
11062	RAIN	30
09065	BREEZE	31
05555	CHAMPION	33
05573	POWER	34
05574	CHAMPION WB	35
05556	PAVÉ	36
06117	PIRATE	37
07279	CLIMA	38
08183	X-SUIT	39
08184	X-SUIT LS	40

03 LINEA CLASSIC
CLASSIC LINE

03554	GRANFONDO	44
03317	MARATHONE	45
03241	COMFORT	47
04242	FALL	48
10201	THUNDER	49
11088	4SEASON	50
09060	HEADWIND	51
05196	CRITERIUM	52
06091	CRITERIUM 3/4	53
07280	CRITERIUM LONG	54

04 ALL ROAD
MOUNTAIN BIKE AND GRAVEL

03527	GREEN-ON	58
04240	FLANDRIA	59
03501	ENDURO FIT	60
04192	ENDURO FIT LS	61
05575	DUST	62
05510	MILE ON	64
05511	ROCK ON	65

05 DONNA
LADY

03479	VIS W	68
03446	SAILING 2 W	69
05576	POWER-X	70
05577	PERFORMER	71
06118	TOUR	72
07283	SHAPER	73

06 BAMBINO
KID

03521	KID JERSEY	76
04212	KID LS JERSEY	77
10178	KID JACKET	78
05535	KID PANT	80
07259	KID LONG PANT	81

07 LINEA TRIATHLON
TRIATHLON LINE

08170	KONA	84
08171	KONA W	85
08175	LANZAROTE	86
08176	LANZAROTE W	87
08211	OLYMPIC	88

08 INTIMO E ACCESSORI
UNDERWEAR AND ACCESSORIES

01089	UNDERWEAR SL PRINTED	90
01085	UNDERWEAR SS PRINTED	90
12292	SUMMER GLOVES	91
12267	CHRONO_TT GLOVES	91
12302	MTB GLOVES	91
12245	WINTER GLOVES	91
12150	SUMMER SOCKS	91
12271	AERO SOCKS	91
12020	VINTAGE RACE CAP	92
12187	SUMMER CAP	92
12263	WINTER NECKWARMER	92
12056	SUMMER NECKWARMER	92
12276	WINTER PRINTED SHOECOVERS	92
12256	SUMMER PRINTED SHOECOVERS	92
12152	ANATOMICAL ARMWARMERS	93
12153	ANATOMICAL KNEEWARMERS	93
12154	ANATOMICAL LEGWARMERS	93

Giessegi Srl è una società fondata nel 1984 da Simone Fraccaro, ciclista professionista su strada e pista negli anni '70 e '80.

L'azienda è oggi uno dei 5 principali produttori di abbigliamento ciclistico custom in Italia distribuendo i suoi prodotti in oltre 30 paesi stranieri su tutti i continenti.

L'obiettivo principale di GSG è quello di soddisfare le richieste dei clienti, adattando il servizio e i prodotti alle esigenze del mercato e alle nuove tendenze. L'azienda ha deciso di mantenere la produzione nel nord-est d'Italia, per avere un controllo diretto sulla filiera dei fornitori, sullo sviluppo del prodotto e sul processo di produzione. I clienti chiedono consegne sempre più rapide, flessibilità sulle quantità e una gamma di prodotti variegata; GSG è in grado di soddisfare queste richieste, perché è proprietaria e gestisce direttamente gli impianti di produzione e si trova in una regione con una lunga tradizione nel settore tessile ciclistico e motoristico.

CHALLENGE YOUR LIMITS CUSTOM COLLECTION -2024-

Giessegi Srl is a company founded in 1984 by Simone Fraccaro, professional road and track rider in the 70s and 80s.

The company is nowadays one of the 5 leading manufacturers of custom bike wear in Italy. Giessegi delivers its products to customers in 30 foreign countries, on

all continents. Our main target is to satisfy our customers' requests, adapting our service and products to their market needs and new trends. We have decided to keep our production in the north east of Italy, to have direct control on the supply chain,

product development and manufacturing process. Our customers are asking for fast deliveries, quantities flexibility and wide range of products; we can fulfil this requests because we own and manage our production plant and we are located in a region with a long tradition in the bike and sport textile industry.





Una storia di passione fatta di persone che negli anni hanno dedicato la loro vita a questo sport.

Prima da professionista e poi da imprenditore, Simone Fraccaro ha dato un'impronta agonistica forte al marchio supportando diversi team fin dalla nascita dell'azienda nel 1984. Atleti, ciclisti su strada, mountain bikers, ad ogni altitudine si possono trovare persone che vestono prodotti GSG. Dall'esperienza nelle competizioni più impegnative nascono le innovazioni tecnologiche e gli sviluppi di ricerca dei capi.

GSG è un'azienda che quotidianamente vive di passione per le due ruote. Un team di professionisti che si dedica con dedizione e preparazione allo sviluppo tecnologico e alla scelta dei migliori materiali da utilizzare per i propri capi.

A story of passion and people who over the years have devoted their lives to this sport.

A former pro cyclist turned businessman, Simone Fraccaro has given this brand a strong competitive slant with sponsorship of different teams since the company was founded in 1984.

Athletes, road cyclists, mountain bikers, people wearing GSG products can be found at all altitudes. Experience in the most arduous of competitions has led to technological innovations and developments into garment research.

A team of professionals who dedicate their time and experience to technology development and selection of the best materials for each garment.

La linea Premium è la linea per chi compete. Sono i prodotti che usano i ciclisti professionisti, con materiali altamente tecnici e performanti, un taglio anatomico ed aerodinamico.

The Premium line is the line for those who compete. These are the products that professional cyclists use, with highly technical and performing materials, an anatomical and aerodynamic cut.



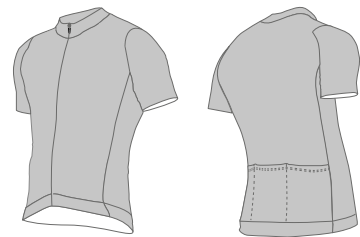
03537
VIS PROMAGLIA M.C.
S.S. JERSEY

FABRIC: RIBTEK
SIZE: XXS-5XL

Tessuto davanti + fianchi: microrete bielastica
Tessuto dietro: microrete
Zip: lunga nascosta, cursore autobloccante
Manica: sagomata taglio vivo
Fine maglia davanti: con risvolto
Fine maglia dietro: con elastico interno
Tasche: 3 tasche aperte
Rifrangente: dettaglio reflex su tasca sinistra
Foro per cuffiette: su tasca sinistra

Front + sides fabric: bielastic mesh
Back fabric: Interpower micro-mesh
Zip: hidden, full length, auto-blocking slider
Sleeve: raw cut, anatomically
Front hem: with lapel
Pockets: 3 open pockets
Back end of jersey: with internal elastic gripper.
Reflective: reflex detail on left pocket
Earphones hole: on the left pocket

Stampabile | Printable



Tre tasche aperte.
3 open pockets.



Collo basso e anatomico.
Low and anatomical collar.

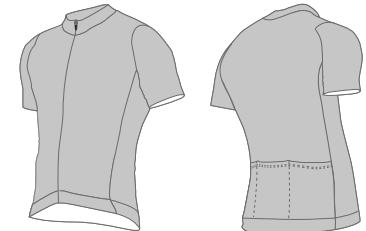
03569
AIRMAGLIA M.C.
S.S. JERSEY

FABRIC: 3D MESH
SIZE: XXS-5XL

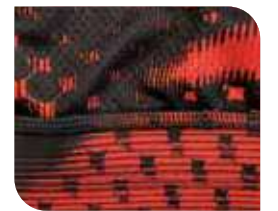
Tessuto davanti + fianchi: rete 3d bielastica
Tessuto dietro: microrete
Zip: lunga nascosta, cursore autobloccante
Manica: sagomata a taglio vivo
Fine maglia davanti: con risvolto
Fine maglia dietro: con elastico siliconato e stampato
Tasche: 3 tasche aperte
Rifrangente: dettaglio reflex su tasca sinistra
Foro per cuffiette: su tasca sinistra

Front + sides fabric: 3d mesh fabric
Back fabric: micro mesh
Zip: hidden, full length, auto-blocking slider
Sleeve: raw cut, anatomically shaped
Front hem: with lapel
Back hem: with reflective siliconated and printed elastic
Pockets: 3 open pockets
Reflective: reflex detail on left pocket
Earphones hole: on the left pocket

Stampabile | Printable



Tessuto in rete per una
maggiore traspirazione.
Mesh fabric for better
breathability.



Fine maglia dietro con elastico
siliconato e stampato.
Back hem with reflective
siliconated and printed elastic.

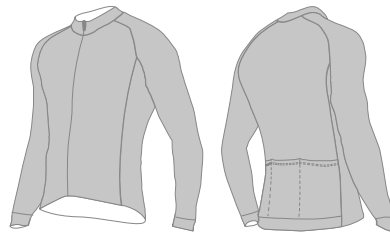
04198
NANIMAMAGLIA M.L. ANTIVENTO
WINDPROOF L.S. JERSEY

FABRIC: NO-WIND
SIZE: XXS-5XL

Tessuto davanti + maniche: bielastico con membrana antivento e anti pioggia
Tessuto dietro + fianchi: felpato bielastico
Zip: lunga nascosta, cursore autobloccante
Manica: sagomata con polsino
Fine maglia davanti: con risvolto
Fine maglia dietro: con elastico rifrangente siliconato e stampato
Rifrangente: elastico fine maglia dietro + fianco
Tasche: 3 tasche aperte
Foro per cuffiette: su tasca sinistra

Front + sleeves fabric: wind-proof and water-proof bielastic fleece
Back + sides fabric: polyester bielastic fleece
Zip: hidden, full length, auto-blocking slider
Sleeve: anatomically shaped with sleeve cuff
Front hem: with lapel
Back hem: with reflective siliconated and printed elastic
Reflective elements: back gripper
Pockets: 3 open pockets
Earphones hole: on the left pocket

Stampabile | Printable



REGULAR FIT



Fine maglia davanti con risvolto.

Front hem with lapel.



Elastico rifrangente con silicone interno.

Reflective elastic with gripper.

GIUBBINO INVERNALE ANATOMICO
ANATOMIC WINTER JACKET

FABRIC: PUMA SQUARE
SIZE: XXS-5XL

Tessuto: bielastico con membrana eVent, antivento e anti pioggia
Zip: lunga nascosta, cursore autobloccante, pattina antivento interna
Fine manica: con polsino taglio vivo
Fine maglia davanti: inserto taglio vivo
Fine maglia dietro: inserto taglio vivo con siliconatura
Rifrangente: inserto posteriore
Tasche: 3 tasche aperte + 1 laterale destra con zip e fodera anticqua
Caratteristiche: corpetto felpato interno con zip

Fabric: eVent wind and waterproof membrane
Zipper: Full hidden zipper
Cuffs: raw edge elastic and breathable material
Front hem: folded material with flat seams
Back hem: elastic gripper with silicone
Reflective elements: back insert
Pockets: 3 back pockets + 1 additional pocket with zipper on the right
Features: Internal fleece vest

Stampabile | Printable

Corpetto interno
Internal fleece vest

SLIM FIT

Corpetto felpato interno + zip.
Internal fleece vest with zipper.Doppio collo.
Double neck.10203
MONCH

04185
HYDRA

FABRIC: NO-WIND
SIZE: XXS-5XL

Tessuto: tecnico con membrana traspirante antivento, idrorepellente, antiacqua

Sottomanica: roubaix bielastico nell'avambraccio interno

Zip: lunga nascosta, cursore autobloccante

Fine manica: polsino taglio vivo

Fine maglia davanti: con risvolto

Fine maglia dietro: inserto anti pioggia

Rifrangente: inserto fine maglia dietro

Tasche: 3 tasche aperte + 1 laterale destra con zip invisibile e fodera antiacqua

Foro per cuffiette: su tasca sinistra

2 zip invisibili: per prese d'aria laterali su fianchi davanti

Fabric: technical fabric with windproof and water resistant membrane

Underarm: bielastic roubaix fabric

Zip: hidden, full length, auto-blocking slider

Sleeve end: raw cut cuff

Front hem: with lapel

Back hem: waterproof insert

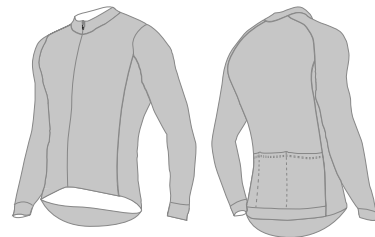
Reflective elements: back hem insert

Pockets: 3 open pockets+1 invisible side pocket and waterproof lining

Earphones hole: on the left pocket

2 invisible Zip: vents on the front part of the sides

Stampabile | Printable



Aperture sui fianchi per una maggiore ventilazione.

Vents on the front part of the sides for better aeration.



Parte posteriore prolungata per una maggiore protezione.

Longer back for a better shield against rain.

GIACCA ANTIVENTO M.L.
WINDPROOF L.S. JACKETMANTELLINA NASTRATA ANTIPIOGGIA M.L.
RAINPROOF L.S. JACKET

FABRIC: WINDOFF LIGHT
SIZE: XXS-5XL

Tessuto: leggero, traspirante con membrana antivento, anti pioggia e idrorepellente

Zip: lunga a vista, idrorepellente

Fine manica: con elastico

Fine maglia dietro: con elastico rifrangente siliconato

Rifrangente: su elastico fine maglia

Caratteristiche: totalmente termo-nastrata

Fabric: polyester bielastic fabric with breathable

windproof, waterproof and water-resistant membrane

Zip: full length, water resistant

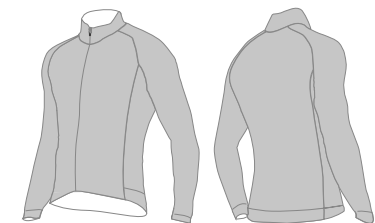
Sleeveend: with elastic

Back hem: with reflective siliconated elastic

Reflective elements: on end jersey's elastic

Features: taped seams

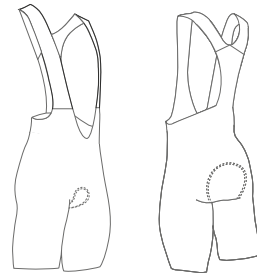
Stampabile | Printable



Cuciture termonastrate.

Sealed seams.

11098
RAIN PRO

05571
AERO1PANTALONCINO CON BRETELLE
BIB SHORTS

FABRIC: MAT 240
SIZE: XXS-5XL

Vantaggi:

- Aerodinamica: cuciture ridotte per la massima aerodinamica
- Vestibilità: Lycra da 240 gr morbida ed elastica, che garantisce anche la massima compressione muscolare senza stringere
- Comfort: taglio vivo all'estremità della gamba per adattarsi ai muscoli dell'atleta
- Sicurezza: il tessuto è approvato Oeko Tex Standard o garantito per la salute della pelle
- Fondello Pulsar, sviluppato e testato con macchine per il rilevamento dei punti di pressione, per garantire il massimo sforzo

Advantages:

- Aerodynamics: reduced seams for maximum aerodynamics
- Fit: soft and elastic 240g Lycra, which also grants maximum muscle compression without tightening
- Comfort: Raw cut at the end of the leg to adapt to the athlete's muscles
- Safety: the fabric is Oeko Tex Standard approved or guaranteed for skin health
- Pulsar seat-pad, developed and tested with machines for detecting pressure points, to guarantee maximum comfort

PULSAR

Usage: Road-MTB
Distance: LONG
Density: 140 kg/m³
Thickness: 14 mm
Layers: 4
Face fabric: recycled ECO BREEZE-TEX
Foams: TRS4 Hi-density, recycled EPF Foam
Technologies: S.A.T.- Shock Absorption Technology
Features: Eco-sustainability, ergonomic fitting



Fine gamba a taglio vivo con silicone fondo gamba.

Raw cut leg end with silicone application.



Bretelle studiate per una migliore aderenza del pantaloncino.

Braces appositely studied for grant a better fit of the bib shorts.

PANTALONCINO CON BRETELLE
BIB SHORTS05572
3PEAKS

FABRIC: AERO LYCRA
SIZE: XXS-5XL

Tessuto: Lycra strutturata
Bretelle: taglio vivo davanti, rete traspirante dietro
Fine gamba: taglio vivo con silicone
Cuciture: piatte

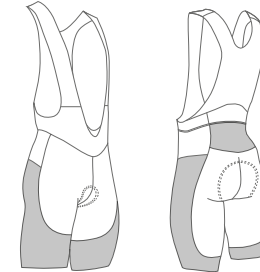
Fabric: Embossed Lycra
Braces: raw cut fabric (front), breathable mesh fabric (rear)
Leg Hem: raw cut Lycra with silicone
Stitching: flat

ZENITH ECO AT man

Usage: Road-MTB
Distance: LONG
Density: 140 kg/m³
Thickness: 14 - 4 - 2 mm
Layers: 4
Face fabric: Eco Soft-Tech
Foams: TRS3 Hi-Density
Technologies: 3X Technology, LF L.S.A.T. Bacteriostatic
Features: L.S.A.T., 3X Technology

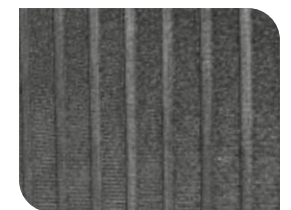


Stampabile | Printable



Fondo gamba taglio vivo con silicone interno.

Raw cut gripper at leg hem.



Bretelle posteriori in tessuto strutturato per un miglior design.

Back mesh with a textured fabric for a better design.

05554
HERO RACE

FABRIC: MAT 240
SIZE: XXS-5XL

Tessuto base: Lycra super-opaca compressiva e confortevole, ultra-performante
Bretelle e girovita: a taglio vivo
Fine gamba: a taglio vivo con applicazione in silicone su lato interno

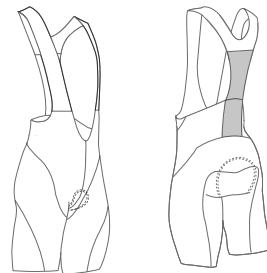
Main fabric: Super-opaque, compressive and ultra-performing Lycra
Suspenders and waistband: raw cut for more comfort
Leg end: raw cut with silicone application inside

PULSAR

Usage: Road-MTB
Distance: LONG
Density: 140 kg/m³
Thickness: 14 mm
Layers: 4
Face fabric: recycled ECO BREEZE-TEX
Foams: TRS4 Hi-density, recycled EPF Foam
Technologies: S.A.T.- Shock Absorption Technology
Features: Eco-sustainability, ergonomic fitting



Stampabile | Printable



Fine gamba a taglio vivo con silicone fondo gamba.

Raw cut leg end with silicone application.



Bretelle studiate per una migliore aderenza del pantaloncino.

Braces appositely studied for grant a better fit and comfort.

PANTALONCINO CON BRETELLE
BIB SHORTSCALZAMAGLIA CON BRETELLE
BIBTIGHT

FABRIC: H2O ADVERSUS
SIZE: XXS-5XL

Tessuto: felpato bielastico, idrorepellente
Bretelle: taglio vivo davanti, rete traspirante dietro
Fine gamba: con inserto in tessuto a taglio vivo idrorepellente
Cuciture: piatte resistenti

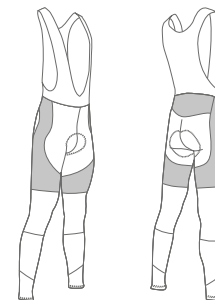
Fabric: bielastic fleece, water resistant
Braces: front raw cut, mesh for breathability on the back.
Leg Hem: raw edge
Stitching: flat

ZENITH 3Xeco SATman

Usage: Road-MTB
Distance: LONG
Density: 140 kg/m³
Thickness: 14 mm
Layers: 4
Face fabric: recycled ECO SOFT-TECH with Bamboo fibres
Foams: TRS3 Hi-Density
Technologies: 3X Technology, LF L.S.A.T. - Shock Absorption Technology
Features: Eco-sustainability, natural antibacterial



Stampabile | Printable



Bretelle con taglio vivo davanti, rete traspirante dietro.

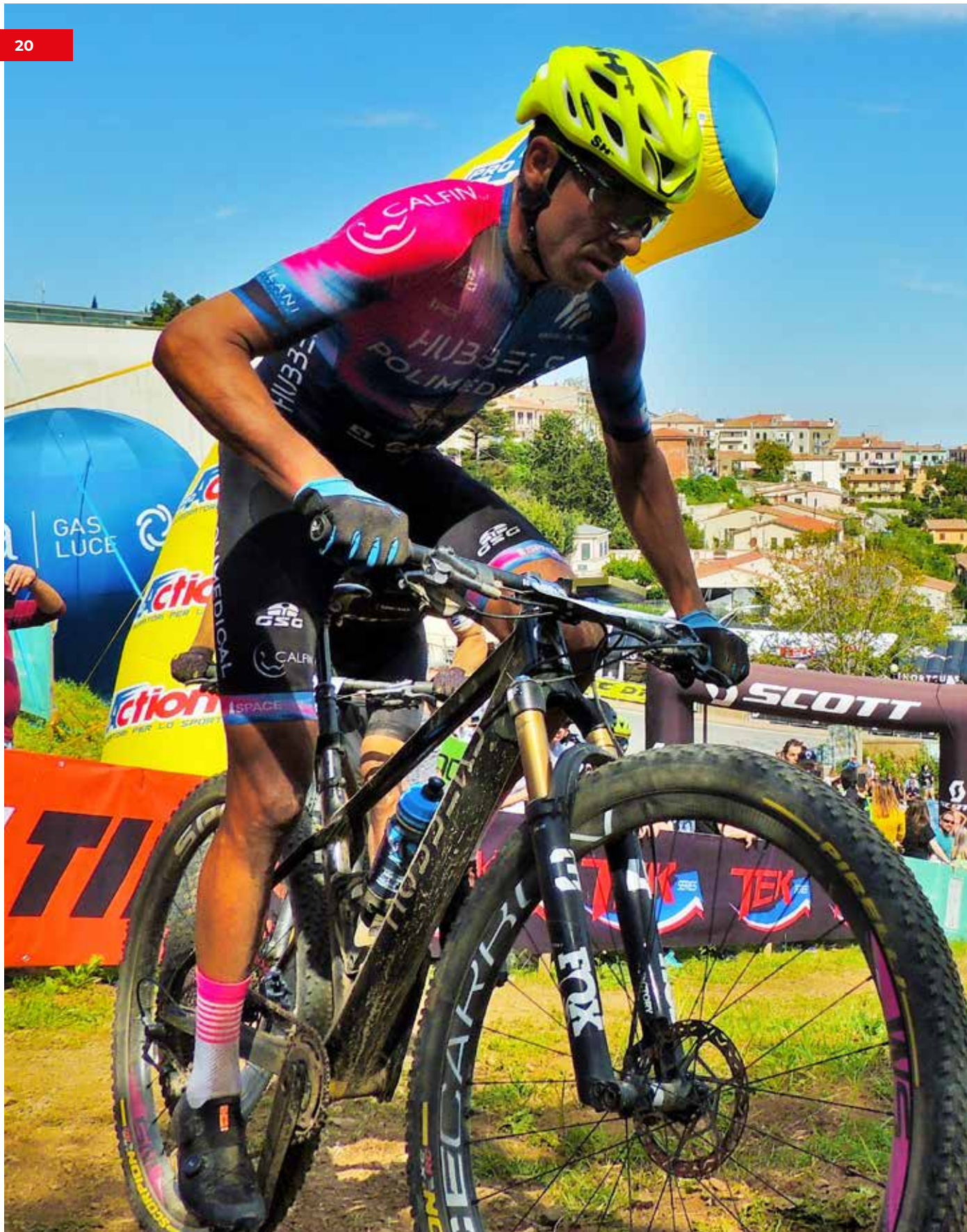
Front raw cut braces, mesh for breathability on the back.



Inserto fondo gamba a taglio vivo.

Raw cut leg end insert.

07282
CLIMA ZERO


BODY CRONO M.L.
 TIME TRIAL SKIN

 08179
CHRONO

FABRIC: HIGH SPEED
SIZE: XXS-5XL

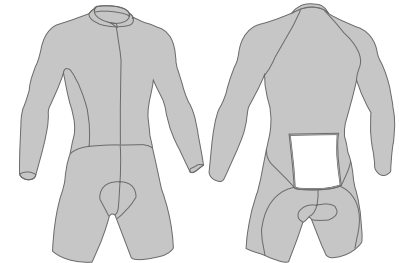
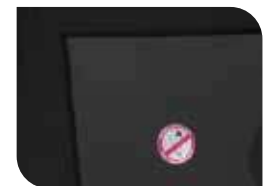
Tessuto corpo: High Speed Lycra
Zip davanti: invisibile
Manica: sagomata a taglio vivo
Tessuto panta: Compression Lycra
Fine gamba: a taglio vivo con silicone

Jersey fabric: High Speed Lycra
Front zip: invisibile
Sleeve: raw cut, anatomically shaped
Shorts fabric: Compression Lycra
Leg hem: raw cut with silicon gripper

ZENITH
 3X eco SAT man

Usage: Road-MTB
Distance: LONG
Density: 140 kg/m³
Thickness: 14 - 4 - 2 mm
Layers: 4
Face fabric: Eco Soft-Tech
Foams: TRS3 Hi-Density
Technologies: 3X Technology, LF L.S.A.T. Bacteriostatic
Features: L.S.A.T. , 3X Technology


Stampabile | Printable


 Capo dalla sagomatura
 aerodinamica.
 Aerodynamic fit.

 Tasca no pinz.
 No pinz pocket.

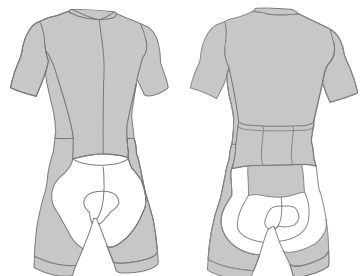
08210
X RACERRACE BODY M.C
RACE S.S. SKIN SUIT

FABRIC: HIGH SPEED
SIZE: XXS-5XL

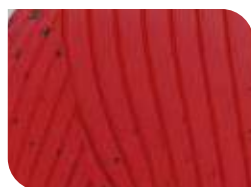
Tessuto maglia: High Speed Lycra
Zip: lunga nascosta, cursore autobloccante
Fine manica: taglio vivo
Fine maglia davanti: con risvolto
Fine gamba: con inserto in Lycra siliconata taglio vivo
Tasche: 3 tasche aperte

Top fabric: High Speed Light Lycra
Zip: hidden, full lenght, auto-blocking slider
Sleeve hem: raw cut
Front hem: with lapel
Leg hem: raw cut Lycra insert with gripper
Pockets: 3 open pockets

Stampabile | Printable



SLIM FIT



Tessuto aerodinamico per una migliore performance.

Aerodynamic fabric for a better performance.



Inserto fondo gamba a taglio vivo.

Raw cut leg end insert.



Usage: Road-MTB
Distance: LONG
Density: 140 kg/m³
Thickness: 14 - 4 - 2 mm
Layers: 4
Face fabric: Eco Soft-Tech
Foams: TRS3 Hi-Density
Technologies: 3X Technology, LF L.S.A.T. Bacteriostatic
Features: L.S.A.T., 3X Technology



ELITE
COLLECTION

La linea Elite è una linea che offre al ciclista dei capi tecnici e performanti, curati nei minimi dettagli.

The Elite line is a line that offers the cyclist technical and performing garments, with attention to the smallest details.



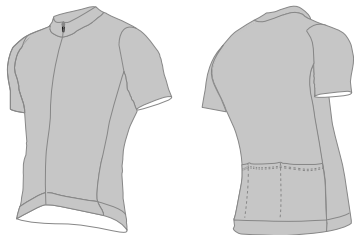
03553
AERO RACEMAGLIA M.C.
S.S. JERSEY

FABRIC: HIGH SPEED
SIZE: XXS-5XL

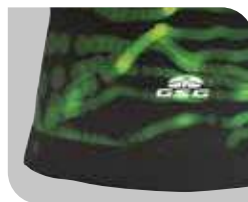
Tessuto davanti + fianchi: High Speed Lycra
Tessuto dietro: microrete
Zip: lunga nascosta, cursore autobloccante
Fine manica: taglio vivo
Fine maglia davanti: con risvolto
Fine maglia dietro: con elastico siliconato e stampato
Rifrangente: dettaglio reflex su tasca sinistra
Tasche: 3 tasche aperte
Foro per cuffiette: su tasca sinistra

Front + sides fabric: High Speed Lycra
Back fabric: micromesh
Zip: hidden, full length, auto-blocking slider
Sleeve: raw cut, anatomically shapes
Front hem: no gripper but comfortable turn-up fabric
Back hem: customizable silicon elastic gripper
Reflective elements: reflex detail on left pocket
Pockets: 3 open pockets
Earphones hole: on the left pocket

Stampabile | Printable



REGULAR FIT



Elastico stampato con silicone interno.

Printed elastic with gripper.



Fine manica taglio vivo.

Raw cut sleeve hem.

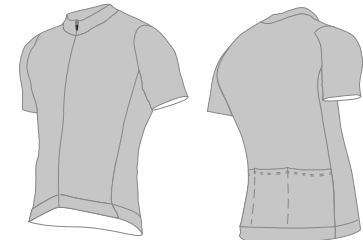
03315
RACEMAGLIA M.C.
S.S. JERSEY

FABRIC: INTERPOWER
SIZE: XXS-5XL

Tessuto davanti: poliestere Interpower bielastico
Tessuto fianchi: rete bielastica
Tessuto dietro: microrete poliestere
Zip: lunga nascosta, cursore autobloccante
Fine manica: taglio vivo
Fine maglia davanti: inserto in Lycra taglio vivo
Fine maglia dietro: con elastico rifrangente siliconato e stampato
Rifrangente: elastico fine maglia dietro + fianco
Tasche: 3 tasche aperte
Foro per cuffiette: su tasca sinistra

Front fabric: Interpower polyester bielastic fabric
Sides fabric: bielastic mesh
Back fabric: polyester micro mesh
Zip: hidden, full length, auto-blocking slider
Sleeve end: raw cut
Front hem: raw cut insert
Back hem: with reflective siliconated and printed elastic
Reflective elements: back hem + sides
Pockets: 3 open pockets
Earphones hole: on the left pocket

Stampabile | Printable



REGULAR FIT

Fine manica taglio vivo.
Raw cut sleeve hem.Fianco e sottomanica in rete bielastica.
Mesh on sides.

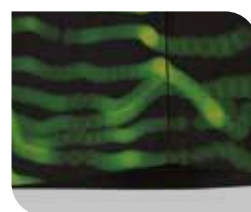
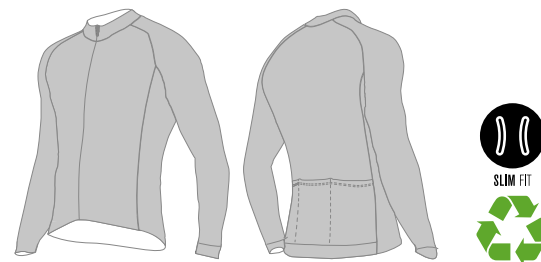
04241
GREEN WARM

FABRIC: GREENPLUS
SIZE: XXS-5XL

Tessuto: felpato bielastico riciclato
Tip: lunga nascosta, cursore autobloccante
Manica: sagomata con fine manica taglio vivo
Fine maglia davanti: con risvolto
Fine maglia dietro: con elastico rifrangente siliconato e stampato
Rifrangente: elastico fine maglia dietro + fianco
Tasche: 3 tasche aperte
Foro per cuffiette: su tasca sinistra

Fabric: polyester bielastic fleece recycled
Zip: hidden, full length, auto-blocking slider
Sleeve: anatomically shaped with sleeve end raw cut
Front hem: with lapel
Back hem: with reflective siliconated and printed elastic
Reflective elements: back hem + sides
Pockets: 3 open pockets
Earphones hole: on the left pocket

Stampabile | Printable



Fine maglia con risvolto.
Front hem with lapel.



Elastico rifrangente con
silicone interno.
Reflective elastic with gripper.

MAGLIA M.L. ANATOMICA
ANATOMIC L.S. JERSEY

GIUBBINO INVERNALE ANATOMICO
ANATOMIC WINTER JACKET

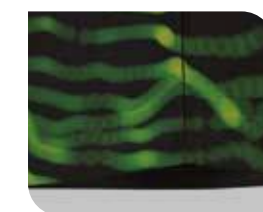
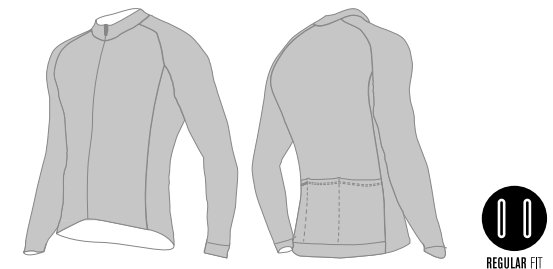


FABRIC: WINDTEX
SIZE: XXS-5XL

Tessuto: caldo, soffice, bielastico con membrana wintex pro antivento, antipioggia, traspirante
Zip: lunga nascosta, cursore autobloccante, pattina antivento interna
Fine manica: con polsino taglio vivo
Fine maglia davanti: con risvolto
Fine maglia dietro: con elastico rifrangente siliconato e stampato
Rifrangente: elastico + bordo tasca
Tasche: 3 tasche aperte + 1 laterale destra con zip e fodera antiacqua
Foro per cuffiette: su tasca sinistra

Fabric: technical fabric with windproof and water resistant membrane
Zip: hidden, full length, auto-blocking slider, windproof inside flap
Sleeve end: raw cut cuff
Front hem: with lapel
Back hem: printed reflective elastic with gripper
Reflective elements: elastic + pocket edge
Rockets: 3 open pockets +1 invisible side pocket and waterproof lining
Earphones hole: on the left pocket

Stampabile | Printable



Fine maglia con risvolto.
Front hem with lapel.



Elastico rifrangente con
silicone interno.
Reflective elastic with

10202
SOFTSHELL

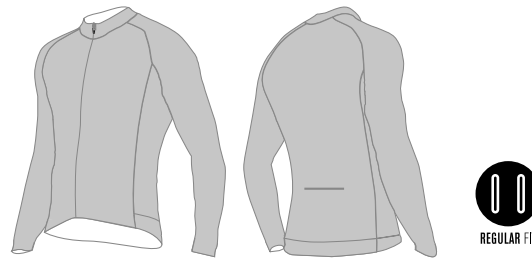
11062
RAINMANTELLINA ANTIPIOGGIA M.L.
RAINPROOF L.S. JACKET

FABRIC: WINDOFF LIGHT
SIZE: XXS-5XL

Tessuto: leggero, traspirante con membrana antivento, antipioggia, idrorepellente
Zip: lunga nascosta, doppio cursore, pattina antivento interna
Fine manica: con elastico
Fine maglia davanti: con risvolto
Fine maglia dietro: con elastico rifrangente siliconato e stampato
Rifrangente: elastico fine maglia dietro + fianco
Tasche: 1 tasca centrale dietro con zip

Fabric: polyester bielastc fabric with breathable windproof, waterproof and water-resistant membrane
Zip: hidden, full length, double slider open, internal windproof flap
Sleeve end: with elastic
Front hem: with lapel
Back hem: with reflective siliconated and printed elastic
Reflective elements: back hem + sides
Pockets: 1 central pocket with zipper

Stampabile | Printable

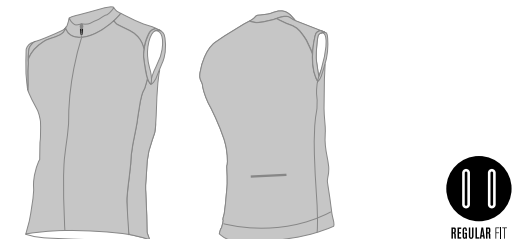
Tasca centrale con zip.
Single central pocket with zipper.Apertura a carrè per una maggiore traspirazione.
Mid-back vent for better breathability.09065
BREEZEGILET ANTIPIOGGIA
RAINPROOF VEST

FABRIC: WINDOFF LIGHT
SIZE: XXS-5XL

Tessuto: leggero, con membrana antivento, antipioggia, idrorepellente
Zip: lunga nascosta, doppio cursore, pattina antivento interna
Fine maglia davanti: con risvolto
Fine maglia dietro: con elastico rifrangente siliconato e stampato
Rifrangente: elastico fine maglia dietro + fianco
Tasche: 1 tasca centrale dietro con zip

Fabric: light fabric with windproof, waterproof and water-resistant membrane
Zip: hidden, full length, double slider open, internal windproof flap
Front hem: with lapel
Back hem: with reflective siliconated and printed elastic
Reflective elements: back hem + sides
Pockets: 1 central pocket with zipper

Stampabile | Printable

Tasca centrale con zip.
Single central pocket with zipper.Elastico rifrangente con silicone interno.
Reflective elastic with gripper.



PANTALONCINO CON BRETELLE
BIB SHORTS

05555
CHAMPION



FABRIC: ARMOUR
SIZE: XXS-5XL

Tessuto: Lycra strutturata non trasparente altamente performante
Bretelle: a taglio vivo davanti, rete traspirante dietro
Cuciture: piatte resistenti
Fine gamba: con inserto in Lycra siliconata taglio vivo

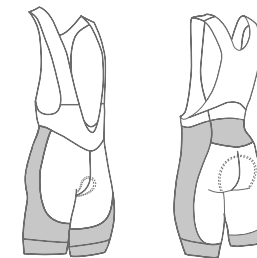
Fabric:
High performance non-transparent structured Lycra
Braces: raw cut fabric on the front, mesh on the back
Stitching: flat
Leg hem: raw cut Lycra insert with gripper

IKON SAT man
Usage: Road-MTB
Distance: LONG
Density: 140 kg/m³
Thickness: 14 mm
Layers: 4
Face fabric: Soft-Tech
Foams: TRS4 Hi-Density
Technologies: LF S.A.T. - Shock Absorption Technology
Features: breathability and quick drying



● Disponibile in tessuto tinto pezza. Available full predyed color Lycra.

Stampabile | Printable



Dettaglio struttura della Lycra
Structured Lycra detail



Inserto in morbida Lycra
siliconata tagliata a vivo.
Raw cut soft Lycra with gripper
insert.

05573
POWER

FABRIC: COMPRESSION LYCRA
SIZE: XXS-5XL

Tessuto: Compression Lycra
Bretelle: morbido elastico rete stampato davanti, rete traspirante dietro
Cuciture: piatte resistenti
Fine gamba: con inserto in Lycra siliconata taglio vivo

Fabric: Compression Lycra
Braces: printable soft-feel elastic mesh on the front, breathable mesh on the back
Stitching: flat
Leg hem: raw cut Lycra insert with gripper

Usage: Road-MTB
Distance: LONG
Density: 140 kg/m³
Thickness: 14 - 4 - 2 mm
Layers: 4

Face fabric: Soft-Tech
Foams: TRS2
Technologies: Perforated LF L.S.A.T.
Features: Sani-Foam, Light B-Elastic

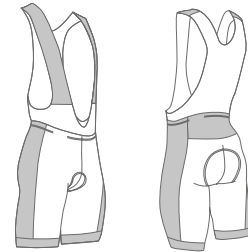


IKON

PANTALONCINO CON BRETELLE
BIB SHORTS

● Disponibile in tessuto tinto pezza con grip stampato. Available full predyed color Lycra and printed gripper.

Stampabile | Printable



Banda laterale anatomica stretta.

Tight side panel anatomically shaped.



Inserto in morbida Lycra siliconata tagliata a vivo.

Raw cut soft Lycra with gripper insert.

PANTALONCINO
SHORTS

FABRIC: COMPRESSION LYCRA
SIZE: XXS-5XL

Tessuto: Compression Lycra
Vita davanti: con fascia in Lycra
Vita dietro: con elastico siliconato
Cuciture: piatte resistenti
Fine gamba: con inserto in Lycra siliconata taglio vivo

Fabric: Compression Lycra
Front waistline: Lycra band
Back waistline: elastic band with gripper
Stitching: flat
Leg hem: raw cut Lycra insert with grip

Usage: Road-MTB
Distance: LONG
Density: 140 kg/m³
Thickness: 14 - 4 - 2 mm
Layers: 4

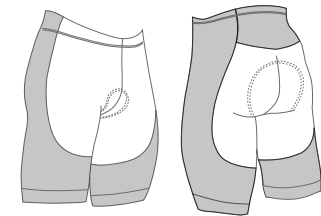
Face fabric: Soft-Tech
Foams: TRS2
Technologies: Perforated LF L.S.A.T.
Features: Sani-Foam, Light B-Elastic



IKON

05574
CHAMPION WB

Stampabile | Printable



Morbida fascia in vita.
Soft waist band.



Inserto in morbida Lycra siliconata tagliata a vivo.

Raw cut soft Lycra with gripper insert.

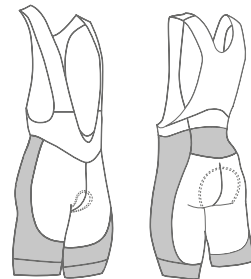
05556
PAVÉPANTALONCINO
CON BRETELLE INVERNALE
WINTER BIB SHORTS

FABRIC: ROUBAIX
SIZE: XXS-5XL

Tessuto: felpato bielastico
Bretelle: taglio vivo davanti, rete traspirante dietro
Cuciture: piatte resistenti
Fine gamba: con inserto a taglio vivo

Fabric: bielastic fleece
Braces: front raw cut mesh on the back for breathability
Stitching: flat
Leg hem: raw cut insert

Stampabile | Printable



SLIM FIT

Usage: Road-MTB
Distance: LONG
Density: 140 kg/m³
Thickness: 14 - 4 - 2 mm
Layers: 4
Face fabric: Soft-Tech
Foams: TRS2
Technologies: Perforated LF L.S.A.T.
Features: Sani-Foam, Light B-Elastic



Bretelle taglio vivo.
Braces raw cut.



Inserto in Roubaix taglio vivo.
Raw cut insert.

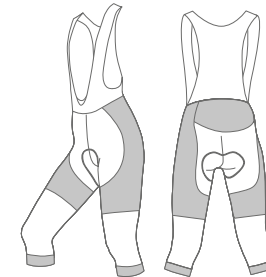
CALZAMAGLIA 3/4
CON BRETELLE
3/4 KNICKERS WITH BRACES06117
PIRATE

FABRIC: ROUBAIX
SIZE: XXS-5XL

Tessuto: felpato bielastico
Bretelle: taglio vivo davanti, rete traspirante dietro
Cuciture: piatte resistenti
Fine gamba: con inserto in Lycra siliconata taglio vivo

Fabric: bielastic fleece
Braces: front raw cut mesh on the back for breathability
Stitching: flat
Leg hem: raw cut Lycra insert with gripper

Stampabile | Printable



SLIM FIT

Usage: Road-MTB
Distance: LONG
Density: 140 kg/m³
Thickness: 14 - 4 - 2 mm
Layers: 4
Face fabric: Soft-Tech
Foams: TRS2
Technologies: Perforated LF L.S.A.T.
Features: Sani-Foam, Light B-Elastic



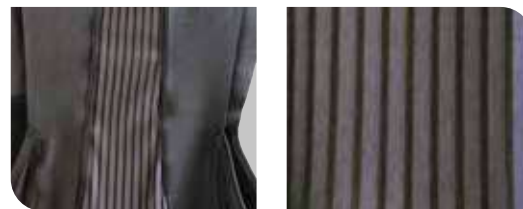
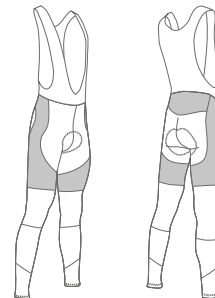
Inserto in morbida Lycra
siliconata taglio vivo.
Soft Lycra with gripper insert.



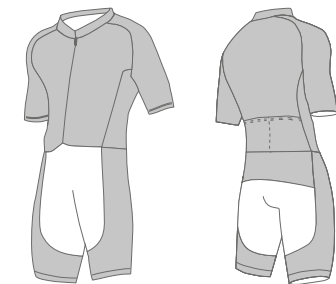
Bretelle con taglio vivo davanti,
rete traspirante dietro.
Front raw cut braces, web for
breathability on the back.

07279
CLIMACALZAMAGLIA CON BRETELLE
BIBTIGHT**FABRIC:** ROUBAIX
SIZE: XXS-5XL**Tessuto:** felpato bielastico
Bretelle: taglio vivo davanti, rete traspirante dietro
Fine gamba: con inserto in tessuto a taglio vivo
Cuciture: piatte resistenti**Fabric:** bielastic fleeced
Braces: front raw cut mesh on the back for breathability
Leg hem: raw edge cutting
Stitching: flat

Stampabile | Printable

Bretelle con taglio vivo davanti, rete traspirante dietro.
Front raw cut braces, web for breathability on the back.BODY M.C.
S.S. SKIN SUIT**FABRIC:** HIGH SPEED
SIZE: XXS-5XL**Tessuto corpo:** High Speed Lycra
Zip: invisibile
Fine manica: taglio vivo
Cuciture: piatte resistenti sul pantalone
Fine gamba: con inserto in Lycra siliconata taglio vivo
Tasche: 2 tasche aperte su schiena**Fabric:** High Speed Lycra
Zip: invisible
Sleeve hem: raw cut
Stitching: flat resistant on the bibs
Leg hem: raw cut Lycra insert with gripper
Pockets: 2 open pockets on the back

Stampabile | Printable

Fine manica taglio vivo.
Raw cutInserto in morbida Lycra
siliconata tagliata a vivo.
Soft Lycra with gripper

IKON

Usage: Road-MTB
Distance: LONG
Density: 140 kg/m³
Thickness: 14 - 4 - 2 mm
Layers: 4
Face fabric: Soft-Tech
Foams: TRS2
Technologies: Perforated LF L.S.A.T.
Features: Sani-Foam, Light B-Elastic

IKON

Usage: Road-MTB
Distance: LONG
Density: 140 kg/m³
Thickness: 14 - 4 - 2 mm
Layers: 4
Face fabric: Soft-Tech
Foams: TRS2
Technologies: Perforated LF L.S.A.T.
Features: Sani-Foam, Light B-Elastic08183
X-SUIT

08184
X-SUIT LSBODY M.L.
L.S. SKIN SUIT

FABRIC: HIGH SPEED
SIZE: XXS-5XL

Tessuto corpo: High Speed Lycra

Zip: invisibile

Fine manica: taglio vivo

Cuciture: piatte resistenti

Fine gamba: con inserto in Lycra siliconata taglio vivo

Tasche: 2 tasche aperte su schiena

Fabric: High Speed Lycra

Zip: invisible

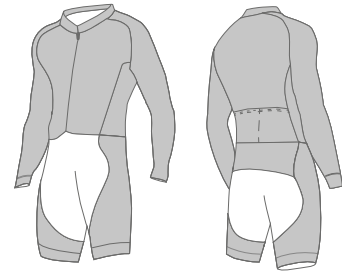
Sleeve hem: raw cut

Stitching: flat

Leg hem: raw cut Lycra insert with gripper

Pockets: 2 open pockets on the back

Stampabile | Printable



SLIM FIT

Usage: Road-MTB

Distance: LONG

Density: 140 kg/m³

Thickness: 14 - 4 - 2 mm

Layers: 4

Face fabric: Soft-Tech

Foams: TRS2

Technologies: Perforated LF L.S.A.T.

Features: Sani-Foam, Light B-Elastic



Inserto in morbida Lycra siliconata tagliata a vivo.
Soft Lycra with gripper



La linea Classic offre dei capi che si adattano ad ogni tipo di corporatura ed alle esigenze di ogni ciclista, garantendo sempre un ottimo comfort, una vestibilità anatomica e caratteristiche tecniche di alto livello.

The Classic line offers garments that adapt to every body type and the needs of every cyclist, always guaranteeing excellent comfort, an anatomical fit and high-level technical characteristics.



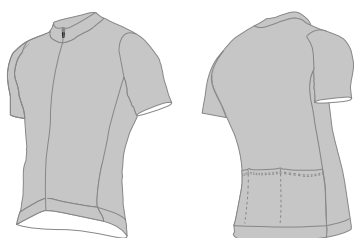
03554
GRANFONDOMAGLIA M.C.
S.S. JERSEY

FABRIC: SKIN DRY
SIZE: XXS-5XL

Tessuto davanti + dietro: leggero e traspirante
Tessuto fianchi: rete 3d bielastica
Zip: lunga nascosta, cursore autobloccante
Fine manica: con risvolto
Fine maglia davanti: con risvolto
Fine maglia dietro: con elastico
Rifrangente: reflex su tasca sinistra
Tasche: 3 tasche aperte
Foro per cuffiette: su tasca sinistra

Front and back fabric: light and breathable
Sides panels of the jersey: 3d mesh fabric
Zip: hidden, full length, auto-blocking slider
Sleeve end: raw cut
Front end: raw cut lycra insert
Back end: with elastic gripper
Reflective: reflex on left pocket
Pockets: 3 open pockets
Earphones hole: on the left pocket

Stampabile | Printable



REGULAR FIT



Dettaglio del tessuto fianchi
Side panels mesh material
detail



Dettaglio del tessuto manica
Detail of the fabric of the
sleeves

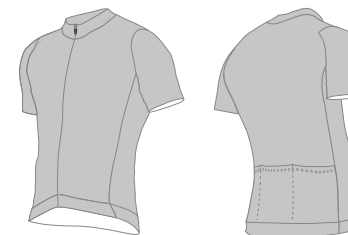
03317
MARATHONEMAGLIA M.C.
S.S. JERSEY

FABRIC: ACTIVEX
SIZE: XXS-5XL

Tessuto: poliestere traspirante
Tessuto maniche: bielastico
Zip: lunga nascosta, cursore autobloccante
Fine manica: taglio vivo
Fine maglia davanti: inserto siliconato taglio vivo
Fine maglia dietro: con elastico siliconato
Tasche: 3 tasche aperte
Foro per cuffiette: su tasca sinistra

Fabric: polyester breathable
Fabric sleeve: bielastic
Zip: hidden, full length, auto-blocking slider
Sleeve hem: raw cut
Front hem: raw cut insert
Back hem: elastic with gripper
Pockets: 3 open pockets
Earphones hole: on the left pocket

Stampabile | Printable



REGULAR FIT



Comodo inserto in lycra taglio
vivo in vita.
Comfortable raw cut lycra
insert waistline.



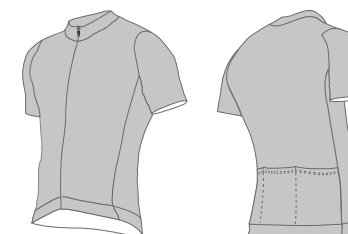
Fine manica taglio vivo.
Raw cut sleeve.

MAGLIA M.C.
S.S. JERSEY03241
COMFORTFABRIC: ACTIVE X
SIZE: XXS-5XL

Tessuto: poliestere strutturato traspirante
Zip: lunga nascosta, cursore autobloccante
Fine manica: con risvolto
Fine maglia davanti: inserto siliconato taglio vivo
Fine maglia dietro: con elastico siliconato
Tasche: 3 tasche aperte
Foro per cuffiette: su tasca sinistra
Rifrangente: inserto fine maglia dietro

Fabric: polyester breathable structured
Zip: hidden, full length, auto-blocking slider
Sleeve hem: with lapel
Front hem: raw cut insert with gripper
Back hem: elastic with gripper reflective
Pockets: 3 open pockets
Earphones hole: on the left pocket
Reflective elements: back hem insert

Stampabile | Printable



COMFORT FIT



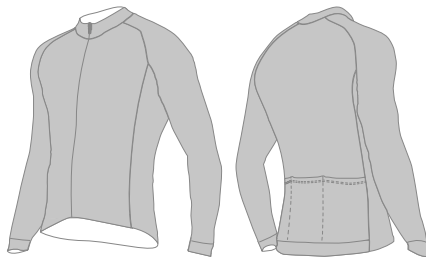
Fine manica con risvolto.
Sleeve end with lapel.

04242
FALLMAGLIA L.C.
L.S. JERSEY**FABRIC:** WARMDRY
SIZE: XXS-5XL

Tessuto: WARMDRY
Zip: lunga nascosta, cursore autobloccante
Fine manica: con polsino a taglio vivo
Fine maglia davanti: con risvolto
Fine maglia dietro: con elastico stampato siliconato
Rifrangente: elastico vita dietro
Tasche: 3 tasche aperte
Foro per cuffiette: su tasca sinistra

Fabric: WARMDRY
Zip: hidden, full length, auto-blocking slider
Sleeve hem: with raw cut cuff
Front hem: with lapel
Back hem: with printed silicone elastic
Reflective elements: elastic waistband at back
Pockets: 3 open pockets
Earphones hole: on the left pocket

Stampabile | Printable



REGULAR FIT



Fine maglia davanti con risvolto.

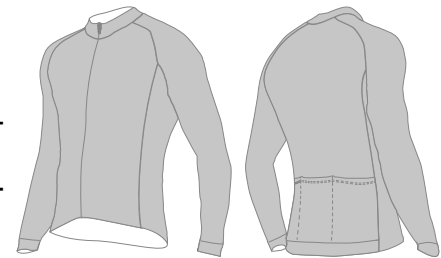
Front hem with lapel.

10201
THUNDERGIUBBINO INVERNALE
WINTER JACKET**FABRIC:** MIRAGE
SIZE: XXS-5XL

Tessuto: bielastico, con membrana antivento, idrorepellente, interno in morbido pile
Zip: lunga nascosta, cursore autobloccante, pattina antivento interna
Fine manica: con polsino
Fine maglia: con elastico siliconato
Rifrangente: inserto fine maglia dietro
Tasche: 3 tasche aperte + 1 laterale destra con zip e fodera anticacqua
Foro per cuffiette: su tasca sinistra

Fabric: bielastic fabric with windproof and water-resistant membrane; soft-feel fleece lining
Zip: hidden, full length, auto-blocking slider, windproof inside flap
Sleeve hem: with cuff
Hem: elastic with gripper
Reflective elements: back hem insert
Pockets: 3 open pockets + 1 invisible side pocket and waterproof lining
Earphones hole: on the left pocket

Stampabile | Printable



REGULAR FIT

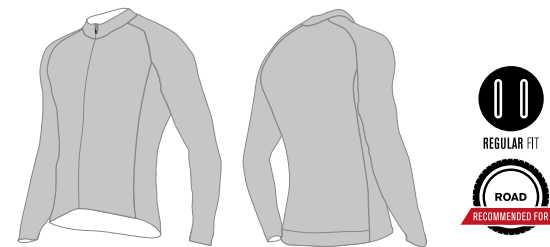


Tre tasche aperte più una con zip laterale.

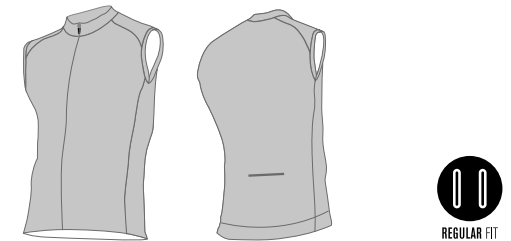
Three open pockets and one additional pocket with side zip.

11088
4 SEASONMANTELLINA ANTIVENTO M.L.
WINDPROOF L.S. JACKET

Stampabile | Printable

**FABRIC:** WINDLOCK
SIZE: XXS-5XL**Tessuto:** leggero, antivento, idrorepellente
Zip: lunga, a vista, doppio cursore
Fine manica: con elastico
Fine maglia: con elastico siliconato**Fabric:** light, water-repellent, windproof fabric
Zip: full length, double slider opening
Sleeve hem: with band
Hem: silicone grip09060
HEADWINDGILET ANTIVENTO
WINDPROOF VEST

Stampabile | Printable

**FABRIC:** WINDLOCK
SIZE: XXS-5XL**Tessuto:** leggero antivento e idrorepellente
Zip: lunga a vista, doppio cursore
Fine maglia: con elastico siliconato
Schiena: carrè in windlock + schiena in rete bielastica**Fabric:** light windproof and water-resistant
Zip: full length visible, double slider opening
Hem: elastic with silicone gripper
Back: mid-back windlock fabric + bielastic mesh on the back**Carrè in tessuto antivento, schiena in rete bielastica.**
Mid-back in windproof material, back in bielastic mesh.**Parte posteriore più lunga per una migliore vestibilità.**
Longer back of the jersey for a better fit.

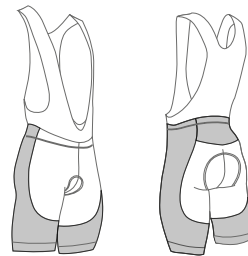
05196
CRITERIUMPANTALONCINO CON BRETELLE
BIB SHORTS

FABRIC: COMPRESSION LYCRA
SIZE: XXS-5XL

Tessuto: Compression Lycra
Bretelle: rete traspirante
Fine gamba: con inserto in Lycra siliconata taglio vivo

Fabric: Compression Lycra
Braces: breathable mesh
Leg hem: raw cut Lycra insert with gripper

Stampabile | Printable



REGULAR FIT

Usage: Road-MTB
Distance: LONG
Density: 140 kg/m³
Thickness: 14 - 4 - 2 mm
Layers: 4
Face fabric: Soft-Tech
Foams: TRS2
Technologies: Perforated LF L.S.A.T.
Features: Sani-Foam, Light B-Elastic



Bretelle in morbida rete per una rapida asciugatura.
Mesh braces for a fast drying.



Inserto in morbida Lycra siliconata taglio vivo.
Soft Lycra with gripper insert.

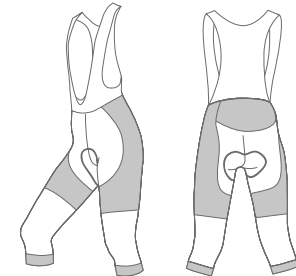
06091
CRITERIUM 3/4CALZAMAGLIA 3/4 CON BRETELLE
3/4 KNICKERS WITH BRACES

FABRIC: ROUBAIX
SIZE: XXS-5XL

Tessuto: felpato bielastico
Bretelle: felpato bielastico
Fine gamba: con inserto in Lycra siliconata taglio vivo

Fabric: bielastic fleece
Braces: bielastic fleece
Leg hem: raw cut Lycra insert with gripper

Stampabile | Printable



REGULAR FIT

Usage: Road-MTB
Distance: LONG
Density: 140 kg/m³
Thickness: 14 - 4 - 2 mm
Layers: 4
Face fabric: Soft-Tech
Foams: TRS2
Technologies: Perforated LF L.S.A.T.
Features: Sani-Foam, Light B-Elastic



Chiusura in vita con zip.
Waistline zipper.



Inserto in morbida Lycra siliconata taglio vivo.
Soft Lycra with gripper.

07280
CRITERIUM LONGCALZAMAGLIA CON BRETELLE
BIBTIGHT

FABRIC: ROUBAIX
SIZE: XXS-5XL

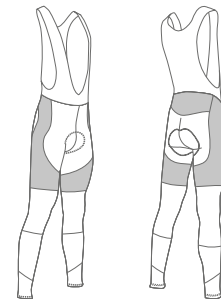
Tessuto: felpato bielastico
Bretelle: felpato bielastico
Fine gamba: con inserto in tessuto a taglio vivo

Fabric: bielastic fleece
Braces: bielastic fleece
Leg hem: raw edge cutting

Usage: Road-MTB
Distance: LONG
Density: 140 kg/m³
Thickness: 14 - 4 - 2 mm
Layers: 4
Face fabric: Soft-Tech
Foams: TRS2
Technologies: Perforated LF L.S.A.T.
Features: Sani-Foam, Light B-Elastic



Stampabile | Printable



REGULAR FIT



Chiusura in vita con zip.
Waistline zipper.



La linea All Road è la soluzione di GSG per chi ama il mondo della mtb e del gravel. Questa linea rappresenta l'ideale fusione tra comfort e performance, per chi ama queste specialità.

The All Road line is GSG's solution for those who love the world of mtb and gravel. This line represents the ideal fusion of comfort and performance, for those who love these specialties.



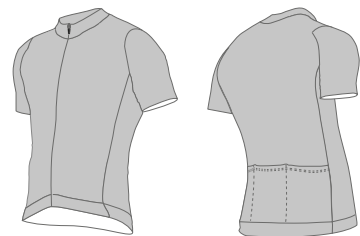
03527
GREEN-ONMAGLIA M.C.
S.S. JERSEY

FABRIC: RE-YARN
SIZE: XXS-5XL

Tessuto: poliestere bielastico riciclato
Zip: lunga nascosta con cursore autobloccante
Manica: taglio vivo
Fine maglia davanti: con risvolto
Fine maglia dietro: con elastico siliconato
Tasche: 3 tasche aperte + 1 laterale destra
Con zip invisibile e fodera antiacqua

Fabric: recycled bielastic polyester
Zip: invisible, full length, auto-blocking slider
Sleeve hem: raw cut
Front hem: silicone band
Back hem: elastic with silicone band
Pockets: 3 open pockets on the back of the jersey + one additional pocket with zipper on the right side

Stampabile | Printable



Morbido tessuto riciclato.
Soft recycled fabric.



Fine manica taglio vivo.
Raw cut sleeve.

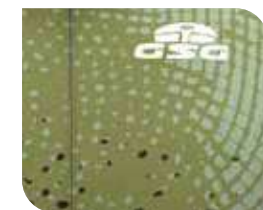
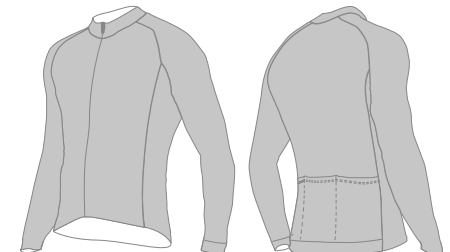
04240
FLANDRIAMAGLIA M.L.
L.S. JERSEY

FABRIC: RE-YARN
SIZE: XXS-5XL

Tessuto: poliestere bielastico riciclato
Zip: lunga nascosta con cursore autobloccante
Manica: taglio vivo
Fine maglia davanti: con risvolto
Fine maglia dietro: con elastico siliconato
Tasche: 3 tasche aperte + 1 laterale destra
Con zip invisibile e fodera antiacqua

Fabric: recycled bielastic polyester
Zip: invisible, full length, auto-blocking slider
Sleeve hem: raw cut
Front hem: silicone band
Back hem: elastic with silicone band
Pockets: 3 open pockets on the back of the jersey + one additional pocket with zipper on the right side

Stampabile | Printable



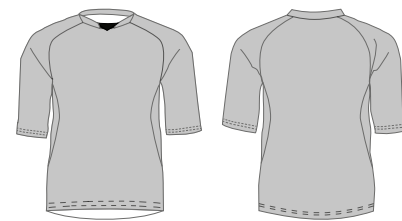
Morbido tessuto riciclato.
Soft recycled fabric.



Fine manica taglio vivo.
Raw cut sleeve.

03501
ENDURO FITMAGLIA M.C.
S.S. JERSEY

Stampabile | Printable



FABRIC: POLYESTER
SIZE: XXS-5XL

Tessuto: poliestere antiabrasione
Tessuto fianchi: rete
Collo: a V insertato
Fine manica: con risvolto
Fine maglia: con risvolto
Opzione: tessuto più traspirante (T1018)

Fabric: abrasion resistant polyester
Sides fabric: mesh
Neckline: inserted V neck
Sleeveend: with lapel
Hem: with lapel
Option: more breathable fabric (T1018)



Collo a V insertato.
Inserted V neck.



Fianchi in rete per una
maggiore traspirabilità.
Mesh sides for better breathability

04192
ENDURO FIT LSMAGLIA M.L.
L.S. JERSEY

Stampabile | Printable



FABRIC: POLYESTER
SIZE: XXS-5XL

Tessuto: poliestere antiabrasione
Tessuto fianchi: rete
Collo: a V insertato
Fine manica: con elastico siliconato
Fine maglia: con risvolto
Opzione: tessuto più traspirante (T1018)

Fabric: abrasion resistant polyester
Sides fabric: mesh
Neckline: inserted V neck
Sleeve hem: elastic with gripper
Hem: with lapel
Option: more breathable fabric (T1018)



Collo a V insertato.
Inserted V neck.



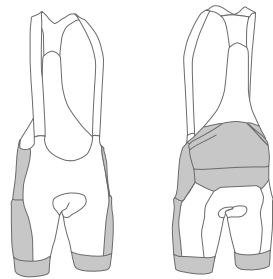
Fianchi in rete per una
maggiore traspirabilità.
Mesh sides for better breathability

05575
DUSTPANTALONCINO CON BRETELLE
BIB SHORTS**FABRIC:** ENERGYSTRETCH
SIZE: XXS-5XL

Tessuto: Energystretch
Tasche: tasche laterali + 2 tasche dietro
Bretelle: taglio vivo davanti, rete traspirante dietro
Fine gamba: con inserto Lycra taglio vivo
Cuciture: piatte

Fabric: Energystretch
Pockets: sides pockets + 2 back pockets
Braces: front raw cut mesh on the back for breathability
Leg hem: raw cut Lycra insert with gripper
Seams: flat

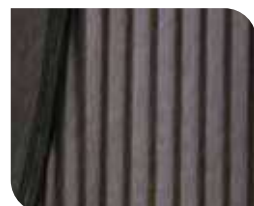
Stampabile | Printable



ERGOTECH

Usage: Road-MTB
Distance: LONG
Density: 140/180 kg/m³
Thickness: 14 - 12 - 6 - 2 mm
Layers: 4

Face Fabric: Eco Soft-Tech Bamboo
Foams: THV Hi-Density
Technologies: HCT Technology, EPF LF L.S.A.T., Bacteriostatic
Features: Sani-Foam, B-Elastic



Bretelle in rete traspirante.
 Braces mesh for breathability.

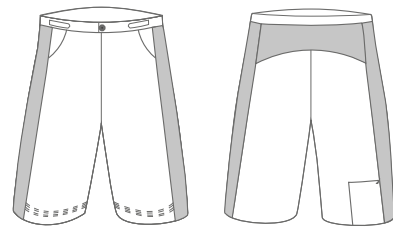


Tasche laterali + 2 tasche dietro.
 Sides pockets + 2 back pockets.



05510
MILE ONBAGGY
BAGGYBERMUDA FREERIDE
FREERIDE SHORTS05511
ROCK ON

Stampabile | Printable

**FABRIC:** ENERGYSTRETCH
SIZE: XXS-5XL

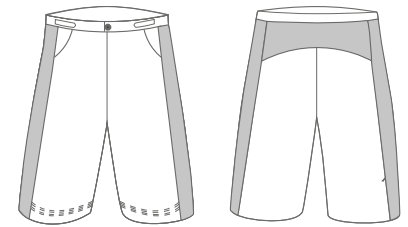
Tessuto: Energystretch
Tasche: 2 tasche laterali aperte + 1 taschino con zip invisibile
Vita davanti: con zip e bottone
Vita dietro + fianco: regolabile con elastico e velcro sui fianchi

Fabric: Energystretch
Inside leg fabric: bielastico cordura
Pockets: 2 open sides pockets + 1 rear pocket with invisible zipper
Front waist: button and zip closure
Back + side waist: adjustable band, velcro closure on the sides



Carrè dietro in morbido tessuto bielastico traspirante.
 Bum panel in soft breathable and bielastico fabric.

Stampabile | Printable

**FABRIC:** HARDSTRETCH
SIZE: XXS-5XL

Tessuto: Hardstretch
Tasche: 2 tasche laterali con zip
Vita davanti: con zip e bottone
Vita dietro e fianco: regolabile con elastico e velcro sui fianchi

Fabric: Hardstretch
Pockets: 2 sides pockets with zipper
Front waistline: button and zip closure
Back and side waistline: adjustable with elastic and velcro on the sides



Regolabile in vita.
 Adjustable on the waist.



Pannelli in tessuto tecnico resistente ad utilizzi gravity.
 Panels in technical fabric

La linea Lady nasce per soddisfare tutte le esigenze di comfort e praticità della donna. Poniamo quindi particolare attenzione alla praticità di ogni capo, proponendo modelli dal fitting aderente sempre perfetto.

The Lady line was created to satisfy all women's comfort and needs. We therefore pay particular attention to the comfort of each garment, offering models with a perfect anatomic fit.

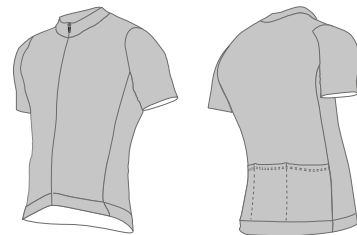


03479
VIS WMAGLIA M.C.
S.S. JERSEYFABRIC: RIBTEK
SIZE: XXS-5XL

Tessuto davanti: microrete bielastica
Tessuto fianchi: rete bielastica
Tessuto dietro: microrete Interpower
Zip: lunga nascosta, cursore autobloccante
Manica: sagomata taglio vivo
Fine maglia davanti: con risvolto
Fine maglia dietro: con elastico siliconato
Rifrangente: inserto fine maglia dietro
Tasche: 3 tasche aperte
Foro per cuffiette: su tasca sinistra

Front fabric: bielastic mesh
Sides fabric: bielastic mesh
Back fabric: Interpower micro-mesh
Zip: hidden, full length, auto-blocking slider
Sleeve: raw cut, anatomically shapes
Front hem: with cuff
Back hem: silicone band
Reflective elements: back hem insert
Pockets: 3 open pockets
Earphones hole: on the left pocket

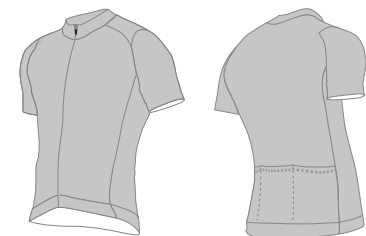
Stampabile | Printable

Manica a giro.
Tailored sleeves.Inserto rifrangente posteriore.
Back reflective insert.03446
SAILING 2 WMAGLIA M.C.
S.S. JERSEYFABRIC: ACTIVEX
SIZE: XXS-5XL

Tessuto: poliestere traspirante strutturato
Zip: lunga nascosta, cursore autobloccante
Fine manica: taglio vivo
Fine maglia davanti: inserto siliconato taglio vivo
Fine maglia dietro: con elastico siliconato
Rifrangente: inserto fine maglia dietro
Tasche: 3 tasche aperte
Foro per cuffiette: su tasca sinistra

Fabric: structured breathable polyester
Zip: hidden, full length, auto-blocking slider
Sleeve hem: raw cut
Front hem: raw cut insert with internal gripper
Back hem: with siliconated elastic
Reflective elements: back hem insert
Pockets: 3 open pockets
Earphones hole: on the left pocket

Stampabile | Printable



REGULAR FIT

ROAD
RECOMMENDED FORMTB
RECOMMENDED FORCollo a vela.
Nest collar.3 tasche aperte.
3 open pockets.

05576
POWER-X

FABRIC: COMPRESSION LYCRA
SIZE: XXS-5XL

Tessuto: Compression Lycra
Vita: fascia in Lycra
Cuciture: piatte resistenti
Fine gamba: con inserto in Lycra siliconata taglio vivo

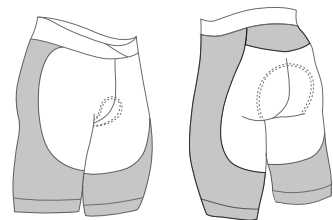
Fabric: Lycra
Waist: Lycra band
Stitching: flat resistant 4 needles seams
Leg hem: raw cut Lycra with gripper

BETHA 3X Eco Sat
Woman

Usage: Road-MTB
Distance: LONG
Density: 140 kg/m³
Thickness: 14 - 12 - 6 - 2 mm
Layers: 4
Face fabric: Eco Soft-Tech
Foams: TRS3 Hi-Density
Technologies: 3X Technology, LF L.S.A.T., Bacteriostatic
Features: Sani-Foam, Light B-Elastic



Stampabile | Printable



Girovita con morbida fascia incrociata sul davanti.
Soft crossed band on waist.



Morbido inserto in lycra siliconata taglio vivo.
Soft feel raw cut lycra insert with gripper.

PANTALONCINO
SHORTPANTALONCINO CON BRETELLE
BIBSHORTS

FABRIC: COMPRESSION LYCRA
SIZE: XXS-5XL

Tessuto: Compression Lycra
Bretelle: taglio vivo davanti, rete dietro
Cuciture: piatte resistenti
Fine gamba: inserto in Lycra siliconata taglio vivo
Vita: con corpetto a taglio vivo

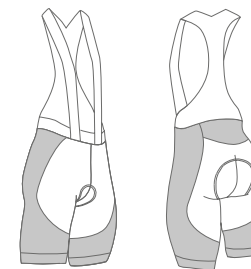
Fabric: Compression Lycra
Braces: front raw cut mesh on the back
Seams: strong flat locks
Leg hem: raw cut Lycra insert with gripper
Waistline: upper part raw cut

BETHA 3X Eco Sat
Woman

Usage: Road-MTB
Distance: LONG
Density: 140 kg/m³
Thickness: 14 - 12 - 6 - 2 mm
Layers: 4
Face fabric: Eco Soft-Tech
Foams: TRS3 Hi-Density
Technologies: 3X Technology, LF L.S.A.T., Bacteriostatic
Features: Sani-Foam, Light B-Elastic



Stampabile | Printable



Bretelle posteriori in rete.
Mesh braces on the back.

05577
PERFORMER

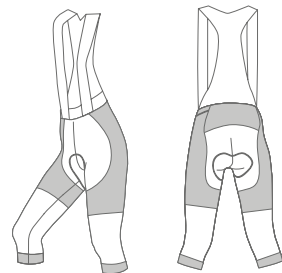
06118
TOURCALZAMAGLIA 3/4 CON BRETELLE
3/4 KNIKERS WITH BRACES

FABRIC: ROUBAIX
SIZE: XXS-5XL

Tessuto: felpato bielastico
Bretella: taglio vivo con inserto in rete dietro
Cuciture: piatte resistenti
Fine gamba: con inserto in Lycra siliconata taglio vivo

Fabric: bielastic fleece
Braces: raw cut and mesh on the back
Seams: strong flat locks
Leg hem: raw cut silicone Lycra insert

Stampabile | Printable



Inserto posteriore personalizzabile.
Back insert customizable.

BETHA 3X Eco Sat
Woman

Usage: Road-MTB
Distance: LONG
Density: 140 kg/m³
Thickness: 14 - 12 - 6 - 2 mm
Layers: 4
Face fabric: Eco Soft-Tech
Foams: TRS3 Hi-Density
Technologies: 3X Technology, LF L.S.A.T., Bacteriostatic
Features: Sani-Foam, Light B-Elastic

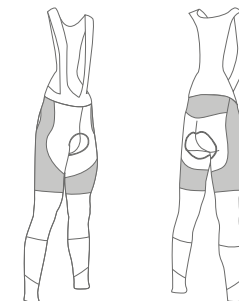
07283
SHAPERCALZAMAGLIA CON BRETELLE
BIBTIGHT

FABRIC: ROUBAIX
SIZE: XXS-5XL

Tessuto: felpato bielastico
Bretelle: taglio vivo con inserto in rete dietro
Cuciture: piatte resistenti
Fine gamba: inserto a taglio vivo

Fabric: bielastic fleece
Braces: raw cut and mesh on the back
Seams: strong flat locks
Leg hem: raw edge cutting

Stampabile | Printable



Bretelle taglio vivo con inserto in rete dietro.
Braces raw cut with mesh on the back.

BETHA 3X Eco Sat
Woman

Usage: Road-MTB
Distance: LONG
Density: 140 kg/m³
Thickness: 14 - 12 - 6 - 2 mm
Layers: 4
Face fabric: Eco Soft-Tech
Foams: TRS3 Hi-Density
Technologies: 3X Technology, LF L.S.A.T., Bacteriostatic
Features: Sani-Foam, Light B-Elastic



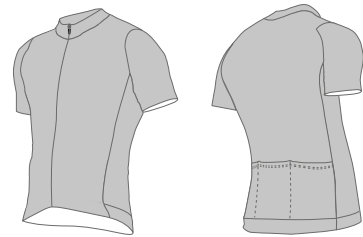
La linea Kid nasce con l'intento di vestire con i nostri prodotti i bambini e ragazzi ovunque.

The Kid line was created with the intention of dressing children and teenagers everywhere with our products.



03521
KID JERSEYMAGLIA M.C.
S.S. JERSEY

Stampabile | Printable



REGULAR FIT

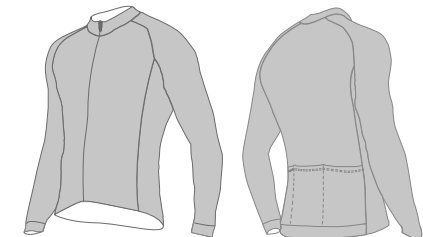
FABRIC: INTERPOWER
SIZE: 2-3 - 16-17

Tessuto: bielastico interpower
Zip: lunga nascosta, cursore autobloccante
Fine manica: taglio vivo
Fine maglia: con elastico siliconato
Tasche: 3 tasche aperte
Rifrangente: inserto fine maglia dietro

Fabric: bielastic interpower
Zip: hidden, full length, auto-blocking slider
Sleeve hem: raw cut
Hem: elastic with gripper
Pockets: 3 open pockets
Reflective elements: back hem insert

Fine manica taglio vivo.
Sleeve hem raw cut.Fine maglia con elastico
siliconato.
Hem with elastic gripper.04212
KID LS JERSEYMAGLIA M.L.
L.S. JERSEY

Stampabile | Printable



REGULAR FIT

FABRIC: WARMDRY
SIZE: 2-3 - 16-17

Tessuto: thermopile
Zip: lunga nascosta, cursore autobloccante
Fine manica: con elastico
Fine maglia: con elastico siliconato
Tasche: 3 tasche aperte
Rifrangente: inserto fine maglia dietro

Fabric: thermopile
Zip: hidden, full length, auto-blocking slider
Sleeve hem: with elastic band
Hem: elastic with gripper
Pockets: 3 open pockets
Reflective elements: back hem insert

Fine maglia con elastico
siliconato.
Hem with elastic gripper.3 tasche aperte.
3 open pockets.

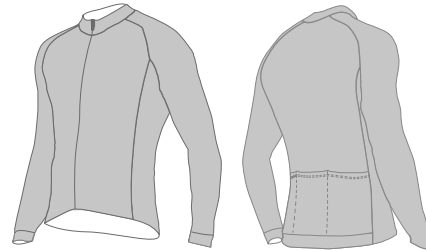
10178
KID JACKETGIUBBINO INVERNALE
WINTER JACKET

FABRIC: MIRAGE
SIZE: 2-3 - 16-17

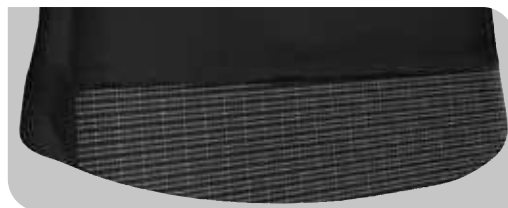
Tessuto: bielastico, con membrana antivento, idrorepellente, interno in morbido pile
Zip: lunga nascosta, cursore autobloccante
Fine manica: con polsino
Fine maglia: con elastico siliconato
Tasche: 3 tasche aperte
Rifrangente: inserto fine maglia dietro

Fabric: elastic fabric with windproof and water resistant membrane; fleeced inside lining
Zip: hidden, full length, auto-blocking slider
Sleeve hem: with cuff
Hem: elastic with gripper
Pockets: 3 open pockets
Reflective elements: back hem insert

Stampabile | Printable



REGULAR FIT



Inserto rifrangente dietro.
Reflective elements back hem insert.



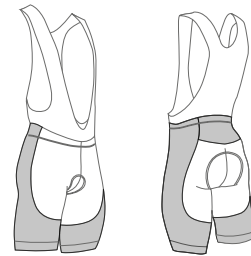
05535
KID PANTPANTALONCINO CON BRETELLE
BIBSHORTS

FABRIC: COMPRESSION LYCRA
SIZE: 2-3 - 16-17

Tessuto: compression Lycra
Bretelle: rete
Fine gamba: con inserto grippante taglio vivo stampato

Fabric: Lycra
Braces: polypropylene mesh
Leg hem: printable elastic band

Stampabile | Printable



REGULAR FIT



Bretelle in morbida rete per una rapida asciugatura.

Soft feel mesh braces for rapid dry.



Fine gamba con morbido inserto personalizzabile.

Soft feel insert band, fully customizable.

JOLLY Boy & Girl

Usage: Road-MTB
Distance: LONG
Density: 120 kg/m³
Thickness: 16 mm
Layers: 4
Face fabric: Coolmax
Foams: TRS Hi-density
Features: Sani-Foam, Polygiene

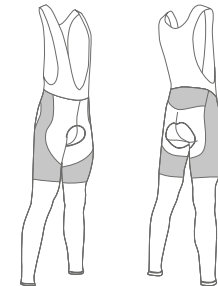
07259
KID LONG PANTCALZAMAGLIA CON BRETELLE
BIBTIGHT

FABRIC: ROUBAIX
SIZE: 2-3 - 16-17

Tessuto: felpato bielastico
Bretelle: felpato bielastico
Fine gamba: con risvolto

Fabric: bielastic fleece
Braces: bielastic fleece
Leg hem: with lapel

Stampabile | Printable



REGULAR FIT



Bretelle in morbido tessuto felpato.

Braces in soft fleece fabric.

JOLLY Boy & Girl

Usage: Road-MTB
Distance: LONG
Density: 120 kg/m³
Thickness: 16 mm
Layers: 4
Face fabric: Coolmax
Foams: TRS Hi-density
Features: Sani-Foam, Polygiene



La linea Triathlon è composta da capi versatili che soddisfano le esigenze di tutte le discipline di questo sport; garantendo comfort e performance.

The Triathlon line is made up of versatile garments that meet the needs of all disciplines of this sport; ensuring comfort and performance.



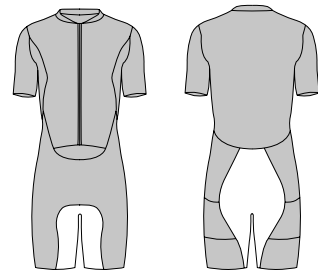
08170
KONA

FABRIC: TRIACTION
SIZE: XXS-5XL

Tessuto panta: Lycra idrorepellente
Tessuto corpetto: Lycra high speed
Zip: lunga davanti a vista con zip garage
Fine manica: taglio vivo
Fine gamba: taglio vivo
Tasche: 2 tasche laterali in rete sui fianchi

Bibshorts fabric: water repellent Lycra
Upper part fabric: Lycra high speed
Zip: full lenght, auto-blocking slider with zip garage
Sleeve: raw cut
Leg hem: raw cut
Pockets: 2 side mesh pockets on sides

Stampabile | Printable



Corpetto con zip lunga. / Top with long zipper.

TRI Triathlon Sat

Usage: Triathlon
Distance: MEDIUM
Density: 140 kg/m³
Layers: 3
Face fabric: Coolmax, B-Elastic
Foams: Hi-density
Features: Sani-Foam, Polygiene, Air-flow system

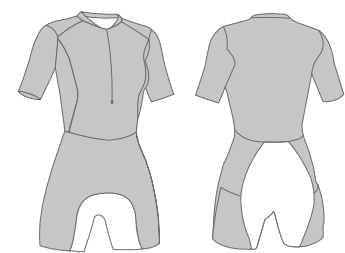
BODY TRIATHLON M.C. DONNA
TRIATHLON SKIN SUIT S.S. WOMAN08171
KONA W

FABRIC: TRIACTION
SIZE: XXS-5XL

Tessuto panta: Lycra idrorepellente
Tessuto corpetto: Lycra high speed
ZIP: davanti con zip garage
Fine manica: taglio vivo
Fine gamba: taglio vivo
Tasche: 2 tasche laterali in rete sui fianchi

Bibshorts fabric: water repellent Lycra
Upper part fabric: Lycra High Speed
Zip: front zip with zip-garage
Sleeve: raw cut
Leg hem: raw cut
Pockets: 2 side mesh pockets on sides

Stampabile | Printable



Corpetto con zip rovesciata. / Top with reversed zipper.

TRI Triathlon Sat

Usage: Triathlon
Distance: LONG
Density: 140 kg/m³
Layers: 3
Face fabric: Coolmax, B-Elastic
Foams: Hi-density
Features: Sani-Foam, Polygiene, Air-flow system



08175
LANZAROTEBODY TRIATHLON S.M. UOMO
TRIATHLON SKIN SUIT S.L. MAN

FABRIC: TRIACTION
SIZE: XXS-5XL

Tessuto: Lycra idrorepellente
Zip: da 30 cm dietro con tirazip per apertura
Fine gamba: taglio vivo
Cuciture: piatte resistenti

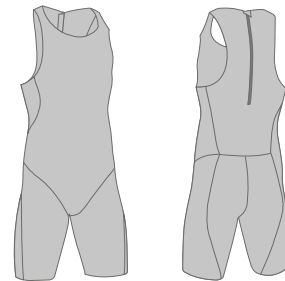
Fabric: water repellent Lycra
Zip: 30 cm-length back zip with zip-puller
Leg hem: raw cut
Seams: resistant flat locks seams

TRI Triathlon

Usage: Triathlon
Distance: MEDIUM
Density: 40 kg/m³
Layers: 1
Face fabric: Microfiber



Stampabile | Printable



Zip dietro con tirazip. / Back zipper with tie.

08176
LANZAROTE WBODY TRIATHLON S.M. DONNA
TRIATHLON SKIN SUIT S.L. WOMAN

FABRIC: TRIACTION
SIZE: XXS-5XL

Tessuto: Lycra idrorepellente
Fine gamba: taglio vivo
Cuciture: piatte resistenti

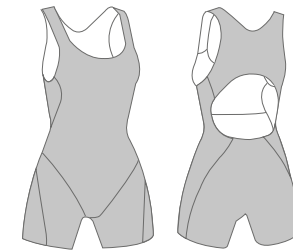
Fabric: water repellent Lycra
Leg hem: raw cut
Seams: strong flat locks seams

AURORA

Usage: Triathlon
Distance: MEDIUM
Density: 40 kg/m³
Layers: 1
Face fabric: Microfiber



Stampabile | Printable



Apertura sulla schiena. / Openin on the back.

08211
OLYMPICBODY TRIATHLON S.M. UOMO
TRIATHLON SKIN SUIT S.L. MAN

FABRIC: H2O
SIZE: XXS-5XL

Tessuto: elastico e idrorepellente
Zip: da 30 cm dietro con tirazip per apertura
Fine gamba: Elastico 45mm personalizzabile, con silicone interno
Cuciture: piatte resistenti

Fabric: water repellent stretch material
Zip: 30 cm-length back zip with zip-puller
Leg hem: 45mm elastic band, customizable and with inside silicon
Seams: resistant flat locks seams

TRI Triathlon

Usage: Triathlon
Distance: MEDIUM
Density: 40 kg/m³
Layers: 1
Face fabric: Microfiber



Stampabile | Printable



REGULAR FIT



TRIATHLON

RECOMMENDED FOR



Inserto posteriore personalizzabile. / Back insert customizable.

UNDERWEAR
& ACCESSORIES

Per l'intimo e gli accessori puntiamo su un'ottima qualità in grado di offrire traspirabilità e leggerezza per quanto riguarda i prodotti estivi, calore e comfort in quelli invernali.

For underwear and accessories, we focus on excellent quality that can offer breathability and lightness for summer products, warmth and comfort in winter ones.



01089

UNDERWEAR SL PRINTED

FABRIC: TECNOMESH
SIZE: XS - 3XL

01085

UNDERWEAR SS PRINTED

FABRIC: TECNOMESH
SIZE: XS - 3XL

12292

SUMMER
GLOVESFABRIC:
HIGH SPEED LIGHT +
SILICONE PALM
SIZE: XS-3XL

12267

CHRONO_TT
GLOVESFABRIC: LYCRA + SILICONE
PALM
SIZE: XS - 3XL

12302

MTB
GLOVESFABRIC: LYCRA + SILICONE
PALM
SIZE: XS - 3XL

12245

WINTER
GLOVESFABRIC: LYCRA + SILICONE
PALM AND TOUCH CREEN
THUMB SND INDEX
FINGER
SIZE: XS - 3XL

12150

SUMMER
SOCKSFABRIC: MERYL SKIN LIFE
SIZE: S/M - L/XL

12271

AERO
SOCKSFABRIC:
HIGH SPEED LYCRA
SIZE: S/M - L/XL



12020

VINTAGE RACE
CAPFABRIC: COTTON
SIZE: ONE SIZE

12187

SUMMER
CAPFABRIC: POLYESTER
SIZE: ONE SIZE

12263

WINTER NECK
WARMERFABRIC: FLEECE
SIZE: ONE SIZE

12056

SUMMER NECK
WARMERFABRIC: TASLAN
SIZE: ONE SIZE

12276

WINTER PRINTED
SHOECOVERSFABRIC: WINDOFF
SIZE:
37/38 - 39/40 - 41/42
43/44 - 45/46 - 47/48

12256

SUMMER PRINTED
SHOECOVERSFABRIC: LYCRA
SIZE:
37/38 - 39/40 - 41/42
43/44 - 45/46 - 47/48

12152

ANATOMICAL
ARMWARMERSFABRIC: FLEECE
SIZE: XS - XL

12153

ANATOMICAL
KNEEWARMERSFABRIC: FLEECE
SIZE: XS - XL

12154

ANATOMICAL
LEGWARMERSFABRIC: FLEECE
SIZE: XS - XL

PULSAR

Usage: Road-MTB
Distance: LONG
Density: 140 kg/m³
Thickness: 14 mm
Face fabric: ECO BREEZE-TEX reciclado
Foams: TRS4 de alta densidad, espuma EPF reciclada
Technologies: S.A.T.- Tecnología de absorción de impactos
Features: Eco sostenibilidad, ajuste ergonómico

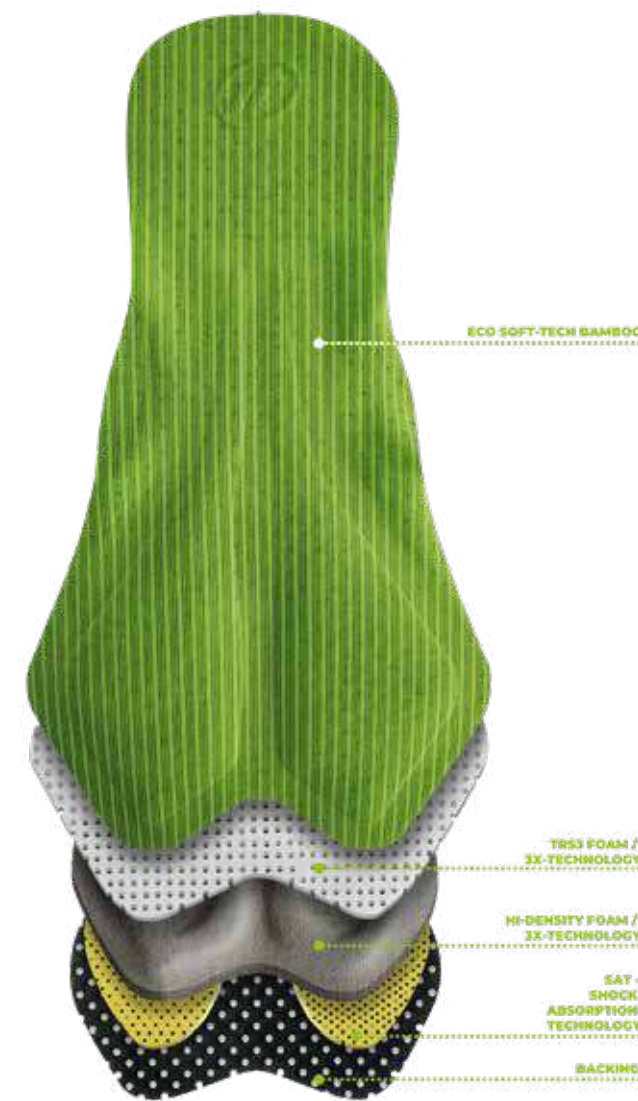


PULSAR rappresenta un aggiornamento del tradizionale processo di termoformatura bidimensionale. La forma anatomica da un'ottima protezione ed una perfetta vestibilità e stabilità in sella. Realizzato con tessuto ECO Breeze-Tex, un sistema certificato di filati di poliammide riciclati provenienti al 100% da scarti di lavorazione primaria pre-consumo. Il rivoluzionario filato NILIT® Breeze garantisce un tocco ultra morbido e un effetto rinfrescante. L'EPF-Eco Performance Foam riciclato non è visibile in quanto è sviluppato nella parte inferiore del fondello e garantisce ottima traspirabilità, leggerezza e flessibilità. Gli inserti HCT-High Cushioning Technology (nella zona ischiatica) e SAT-Shock Absorption Technology (nella zona perineale) garantiscono la massima protezione.

PULSAR represents an update of the traditional two-dimensional thermoforming process. The anatomical shape provides excellent protection and perfect fit and stability in the saddle. Made with ECO Breeze-Tex fabric, a certified system of recycled polyamide yarns sourced 100% from pre-consumer primary processing waste. The revolutionary NILIT® Breeze yarn guarantees an ultra-soft touch and a refreshing effect. The recycled EPF-Eco Performance Foam is not visible as it is developed in the lower part of the pad and guarantees excellent breathability, lightness and flexibility. The HCT-High Cushioning Technology inserts (in the ischial area) and SAT-Shock Absorption Technology (in the perineal area) guarantee maximum protection.

ZENITH ECO SAT MAN

Usage: Road-MTB
Distance: LONG
Density: 140 kg/m³
Thickness: 14 - 4 - 2 mm
Layers: 4
Face fabric: Eco Soft-Tech
Foams: TRS3 Hi-Density
Technologies: 3X Technology, LF L.S.A.T. Bacteriostatic
Features: L.S.A.T., 3X Technology

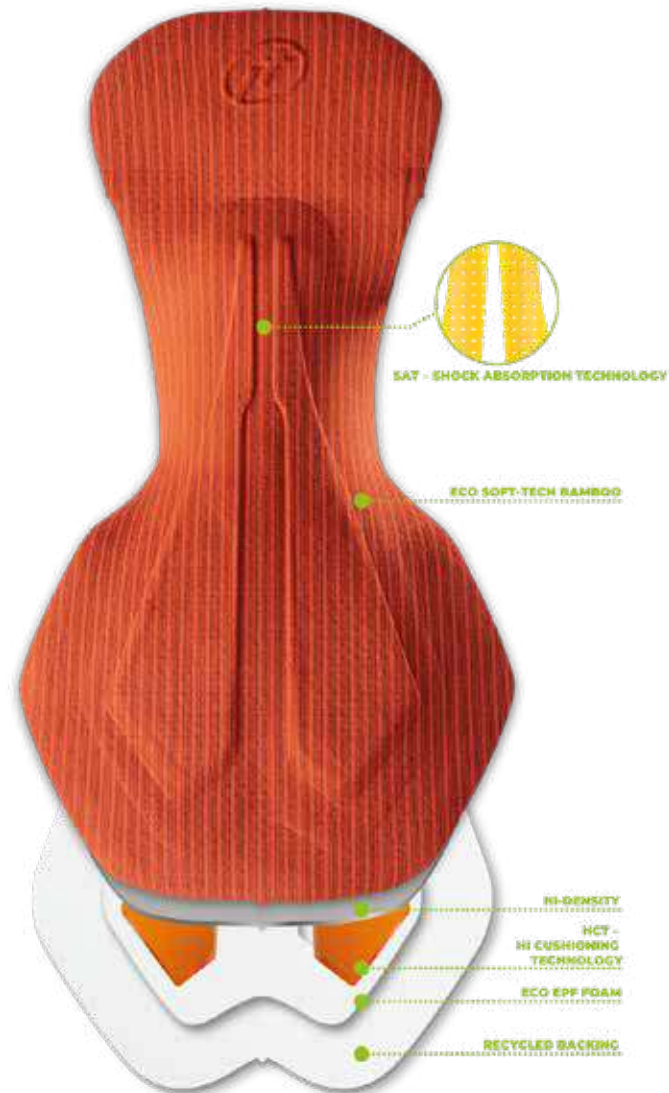


Fondello uomo sottile ma con un'ottima memory foam che garantisce un assorbimento degli urti migliore di un gel in silicone, garantendo minor peso, minor spessore e maggiore traspirazione. Il tessuto è ecosostenibile e ricavato dalle fibre del Bamboo, e garantisce morbidezza, traspirabilità e rapidità di asciugatura.

Thin men's chamois but with excellent memory foam that guarantees better shock absorption than a silicone gel, ensuring less weight, less thickness and greater breathability. The fabric is eco-sustainable as it is made from Bamboo fibers, very soft, breathable and quick drying.

| ERGOTECH MAN

Usage: Road-MTB
Distance: LONG
Density: 1407180 kg/m³
Thickness: 14 - 12 - 6 - 2mm
Layers: 4
Face Fabric: Eco Soft-Tech Bamboo
Foams: THV Hi-Density
Technologies: HCT Technology, EPF LF L.S.A.T. Bacteriostatic
Features: Sani-Foam, B-Elastic



Fondello sottile ma con un'ottima memory foam che garantisce un assorbimento degli urti migliore di un gel in silicone, garantendo minor peso, minor spessore e maggiore traspirazione. Il tessuto è ecosostenibile e ricavato dalle fibre del Bamboo, e garantisce morbidezza, traspirabilità e rapidità di asciugatura.

Thin men's chamois but with excellent memory foam that guarantees better shock absorption than a silicone gel, ensuring less weight, less thickness and greater breathability. The fabric is eco-sustainable as it is made from Bamboo fibers, very soft, breathable and quick drying.

| IKON SOFT PRINT TRS2 SAT

Usage: Road-MTB
Distance: LONG
Density: 140 kg/m³
Thickness: 14 - 4 - 2 mm
Layers: 4
Face fabric: Eco Soft-Tech
Foams: TRS3 Hi-Density
Technologies: 3X Technology, LF L.S.A.T. Bacteriostatic
Features: L.S.A.T. , 3X Technology



IKON offre comfort eccezionale grazie all'alto spessore (14mm) e alla densità della spugna (140kg/m³), è realizzato in Soft-Tech, una microfibra molto elastica che permette di adattarsi perfettamente alla sella ed ha un piacevole soft-touch che garantisce comfort all'atleta anche dopo molte ore in sella. Il modello è in TRS2, la spugna innovativa perforata con fori da 3mm che garantisce una migliore traspirabilità e rapida asciugatura. Inoltre adotta la tecnologia LSAT, uno speciale mix di spugne che assorbe oltre 80% delle vibrazioni che arrivano dalla strada.

IKON offers maximum comfort thanks to high density (140kg/m³) and multi level thickness (14mm). It is presented with Soft-Tech, a high-tech micro-fiber which enables a perfect fitting on saddle and comfort due to its pleasant soft-touch. The foam is TRS2, the innovative perforated foam, with 3mm holes, that grants a better transpirability and a quick drying. At last the pad uses LSAT technology, a special mix of foams absorbing more than 80% of vibrations generated by roads.

| BETHA 3X ECO SAT WOMAN

Usage: Road-MTB
Distance: LONG
Density: 140 kg/m³
Thickness: 14 - 12 - 6 - 2mm
Layers: 4
Face fabric: Eco Soft-Tech
Foams: TRS3 Hi-Density
Technologies: 3X Technology, LF L.S.A.T., Bacteriostatic
Features: Sani-Foam, Light B-Elastic



Fondello donna sottile ma con un'ottima memory foam che garantisce un assorbimento degli urti migliore di un gel in silicone, garantendo minor peso, minor spessore e maggiore traspirazione. Il tessuto è ecosostenibile e ricavato dalle fibre del Bamboo, e garantisce morbidezza, traspirabilità e rapidità di asciugatura.

Thin women's chamois but with excellent memory foam that guarantees better shock absorption than a silicone gel, ensuring less weight, less thickness and greater breathability. The fabric is eco-sustainable as it is made from Bamboo fibers, very soft, breathable and quick drying.

| JOLLY PRINTED BOY&GIRL

Usage: Road-MTB
Distance: LONG
Density: 120 kg/m³
Thickness: 16 mm
Layers: 4
Face fabric: Coolmax
Foams: TRS Hi-density
Features: Sani-Foam, Polygiene



Modello studiato per offrire un prodotto tecnico anche al ciclista più piccolo. I sostegni centrali hanno un'alta densità e garantiscono assorbimento degli impatti. Le zone periferiche hanno spessori e densità inferiori per esaltare al massimo l'elasticità e la morbidezza del tessuto. Il modello è presentato in 2 taglie: XS e S. Per entrambe le taglie c'è la possibilità di aggiungere inserti in SAT per un'ottimizzazione dell'assorbimento impatti.

Model featuring technical devices developed for young bikers. The high density inserts in the central part grant shock-absorption whilst the lateral areas have lower thickness and density foams to fully enhance the softness and the elasticity of the fabric. The model is presented in two sizes: XS and S. For both sizes there is the possibility of adding SAT inserts for an excellent shock absorption.



TRIATHLON Sat Man

Usage: Triathlon
Distance: MEDIUM
Density: 140 kg/m³
Layers: 3
Face fabric: Coolmax, B-Elastic
Foams: Hi-density
Features: Sani-Foam, Polygiene, Air-flow system



ZEPHIR Triathlon Sat Woman

Usage: Triathlon
Distance: LONG
Density: 140 kg/m³
Layers: 3
Face fabric: Coolmax, B-Elastic
Foams: Hi-density
Features: Sani-Foam, Polygiene, Air-flow system



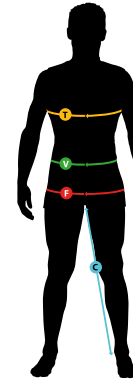
TRIATHLON Man

Usage: Triathlon
Distance: MEDIUM
Density: 40 kg/m³
Layers: 1
Face fabric: Microfiber



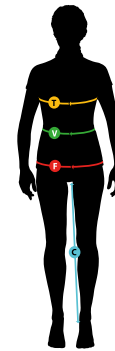
AURORA Woman

Usage: Triathlon
Distance: MEDIUM
Density: 40 kg/m³
Layers: 1
Face fabric: Microfiber



MAN

NOSTRA TAGLIA OUR SIZE	1	2	3	4	5	6	7	8	9	10
TAGLIA SIZE	XXS	XS	S	M	L	XL	XXL	3XL	4XL	5XL
TAGLIA CORRISPONDENTE EUROPEAN SIZE	42	44	46	48	50	52	54	56	58	60
TORACE CHEST	T cm. 84 inch 33,1	88 34,6	92 36,2	96 37,8	100 39,4	104 40,9	108 42,5	112 44,1	116 45,7	120 47,2
VITA WAIST	V cm. 70 inch 27,6	74 29,1	78 30,7	82 32,3	86 33,9	90 35,4	94 37,0	98 38,6	102 40,2	106 41,7
BACINO HIPS	F cm. 92 inch 36,2	96 37,8	100 39,4	104 40,9	108 42,5	112 44,1	116 45,7	120 47,2	124 48,8	128 50,4
INTERNO GAMBA (alla caviglia) INSIDE LEG	C cm. 77 inch 30,3	78 30,7	79 31,1	80 31,5	81 31,9	82 32,3	83 32,7	84 33,1	85 33,5	86 33,9



WOMAN

NOSTRA TAGLIA OUR SIZE	1	2	3	4	5	6	7	8	9	10
TAGLIA SIZE	XXS	XS	S	M	L	XL	XXL	3XL	4XL	5XL
TAGLIA CORRISPONDENTE EUROPEAN SIZE	38	40	42	44	46	48	50	52	54	56
TORACE CHEST	T cm. 76 inch 29,9	80 31,4	84 33,0	88 34,6	92 36,2	96 37,7	100 39,3	104 40,9	108 42,5	112 44,0
VITA WAIST	V cm. 58 inch 22,8	62 24,4	66 25,9	70 27,5	74 29,1	78 30,7	82 32,2	86 33,8	90 35,4	94 37,0
BACINO HIPS	F cm. 86 inch 33,8	90 35,4	94 37,0	98 38,5	102 40,1	106 41,7	110 43,3	114 44,8	118 46,4	122 48,0
INTERNO GAMBA (alla caviglia) INSIDE LEG	C cm. 72 inch 28,3	73 28,7	74 29,1	75 29,5	76 29,9	77 30,3	78 30,7	79 31,1	80 31,4	81 31,8



KID

NOSTRA TAGLIA OUR SIZE	1	2	3	4	5	6	7	8
TAGLIA SIZE	2-3	4-5	6-7	8-9	10-11	12-13	14-15	16-17
ANNI YEARS	2-3	4-5	6-7	8-9	10-11	12-13	14-15	16-17
ALTEZZA HEIGHT	cm. 92-98	104-110	116-122	128-134	140-146	152-158	>164	



Lavare il capo separatamente.

Lavare il capo da rovescio.

E' preferibile il lavaggio a mano in acqua tiepida (max. 30 °C).

In lavatrice meglio inserire il capo in un sacchetto di lavaggio.

Utilizzare detersivi neutri liquidi per capi delicati.

Non utilizzare candeggina e/o ammorbidenti.

Scegliere un programma per tessuti molto delicati.

Non centrifugare.

Non lasciare il capo in ammollo e risciacquarlo senza torcere e/o strofinare.

Per rimuovere l'acqua in eccesso dal capo spremere a mano delicatamente.

Non utilizzare asciugatrici a tamburo rotativo.

Lasciare asciugare il capo all'ombra, in posizione distesa o appeso, mai al sole.

La manutenzione dei capi GSG è indicata nell'etichetta all'interno di ogni capo. Segui le indicazioni per avere sempre un capo all'altezza della tua performance.

Wash separately.

Before washing, turn the garment inside out.

We recommend to hand-wash your garment (max 30° C).

Machine-wash - always using a wash bag.

Use mild liquid detergent only.

Do not use bleachers end/or softeners.

Choose a delicate washing-cycle.

Do not spin after wash.

Do not soak, wring or rub.

To remove excess water from your garment gently squeeze by hand.

Do not tumble dry.

Do not dry under the sun.

Individual care instructions for GSG products are shown on the label of each garment. To maintain the optimum performance of your product, always follow these care instructions.



E' PREFERIBILE IL LAVAGGIO A MANO IN ACQUA TIEPIDA (MAX. 30 °C).

WE RECOMMEND TO HAND-WASH YOUR GARMENT (MAX 30° C).



NON UTILIZZARE CANDEGGINA E/O AMMORBIDENTI.

DO NOT USE BLEACHERS END/OR SOFTENERS.



NON STIRARE. DO NOT IRON.



NON CENTRIFUGARE. DO NOT SPIN AFTER WASH.

1. Scegli la linea che preferisci

Scegli la linea che più soddisfa le esigenze della tua squadra.

2. Richiedi il kit taglie

Prima di effettuare l'ordine, richiedi in azienda o al nostro agente di zona il kit taglie per la prova dei capi.

3. Effettua l'ordine

Raccogli le taglie e le quantità necessarie alla tua squadra.

I minimi sono di 10 pezzi per la parte alta e 10 pezzi per la bassa.

I loghi devono essere in formato vettoriale.

Per qualsiasi dubbio contatta l'azienda o il nostro agente di zona.

Invia ordine e loghi all'agente.

4. Approvazione bozzetto

Riceverai il bozzetto in base alle specifiche grafiche inviate.

Le eventuali fasi di modifica successive non sono da intendersi come un cambio totale di design.

Verranno gestite fino a 3 fasi di modifica, dalla quarta saranno a pagamento.

Il bozzetto deve necessariamente essere approvato in forma scritta. Un ritardo nell'approvazione può influire sui tempi di consegna.

5. Tempi di consegna

Riceverai la conferma d'ordine con la quale ti comunicheremo la data di spedizione prevista per il tuo ordine.

I tempi di consegna avvengono in media dalle 4 alle 5 settimane ma possono variare a seconda del periodo di produzione.

Il conteggio decorre dal momento in cui saranno inviati ordine, acconto e specifiche grafiche.

1. Choose your favorite collection

Choose the collection that best meets your team's needs.

2. Request the right size kit

Before placing your order, you can ask us or contact our local agent to try the garments for size.

3. Send the order

Collect sizes and quantities for your team.

The minimum order is for 10 items that are tops and 10 items that are bottoms.

Send the order and logos to the agent.

The logos must be in the format of vector graphics.

If you have any questions, please contact the company or the local agent.

4. Layout approval

You will receive the layout according to the graphics and elements you sent us.

The following amendments shall not be considered as a total change of layout.

Modifications up to three in number will be accepted. From the fourth change onwards we will start to charge for amendments.

The layout must be approved, by you, in writing. A delay in the approval may cause a delay in delivery.

5. Delivery Time

You will receive your order confirmation in which we will notify you of the foreseen shipping date for your order.

The delivery time is between 4 and 5 weeks, but can vary depending on the period of production.

The delivery time is calculated from the moment in which you send the order, deposit and graphic elements.

 GSG Sports Wear
 GSG Sports Wear

www.giessegi.com



GIESSEGI s.r.l.
Via E. Minato, 2 - 31030 - Riese Pio X (TV) - Italy
Tel. +39.0423.746809 - Fax+39.0423.747084
info@giessegi.com